


Tests [Edit Test](#)
 Tests
  Groups
  Links

 **Primary 5 Science (Term 4) - ACS** 
 Duplicate Print Delete Assign Test**Test Introduction**[+ Add Introduction](#)**72 Questions** (75 Points)Question Bank: 9,275 Questions 

Test Questions

1 Test Assignment

**Question 1**

Primary 5 Science » Primary 5 Science (Term 4)

2 pts

For each question, four options are given. One of them is the correct answer. (56 marks)

The table below shows the characteristics of four plants A, B, C and D that are found in the school garden.

Plants	Characteristics		
	Bears fruits	Reproduce by spores	Found on land
A	✓		✓
B		✓	✓
C	✓		
D		✓	

Based on the information above, which of the plant(s) is/are flowering plants?

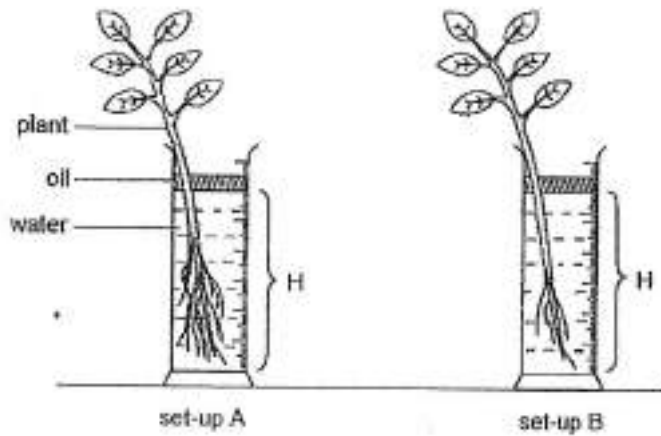
- A) A and D
- B) A and C
- C) B and C
- D) B and D

**Question Type:** Multiple Choice  
**Randomize Answers:** No  
**Date Added:** Tue 27th Jul 2021  
**Last Modified:** N/A  
**QID#:** 28,531,138

[Answers](#) | [Edit](#) | [Duplicate](#) | [Used In](#) | [Reorder](#)
[Remove From Test](#)

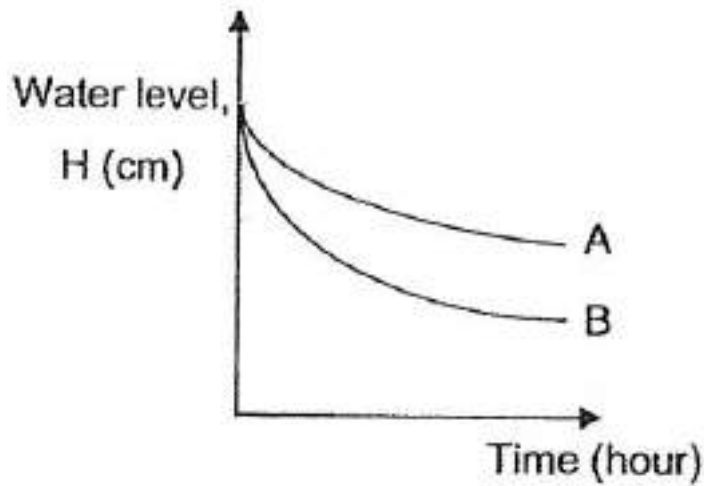
### Question 2

Sean conducted an experiment in a classroom using set-ups A and B as shown below. He recorded the water level,  $H$ , at regular time intervals.

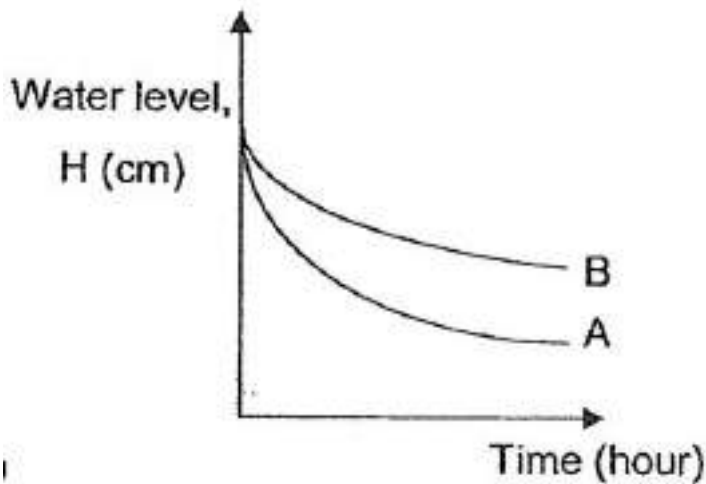


Which one of the following graphs represents the correct results obtained for the plants in both set-ups?

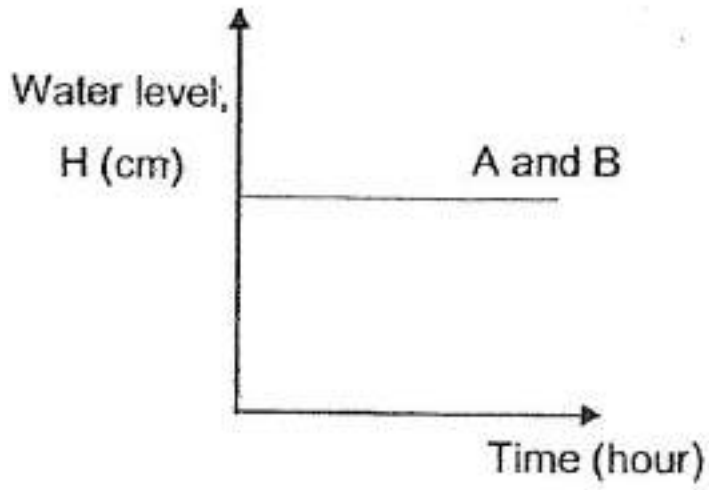
A)



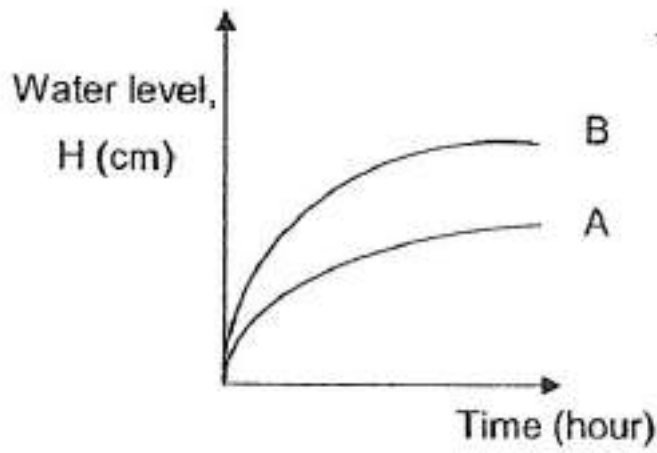
✓ B)



C)



D)



**Question Type:** Multiple Choice  
**Randomize Answers:** No  
**Date Added:** Tue 27th Jul 2021  
**Last Modified:** N/A  
**QID#:** 28,531,137

[Answers](#) | [Edit](#) | [Duplicate](#) | [Used In](#) | [Reorder](#)

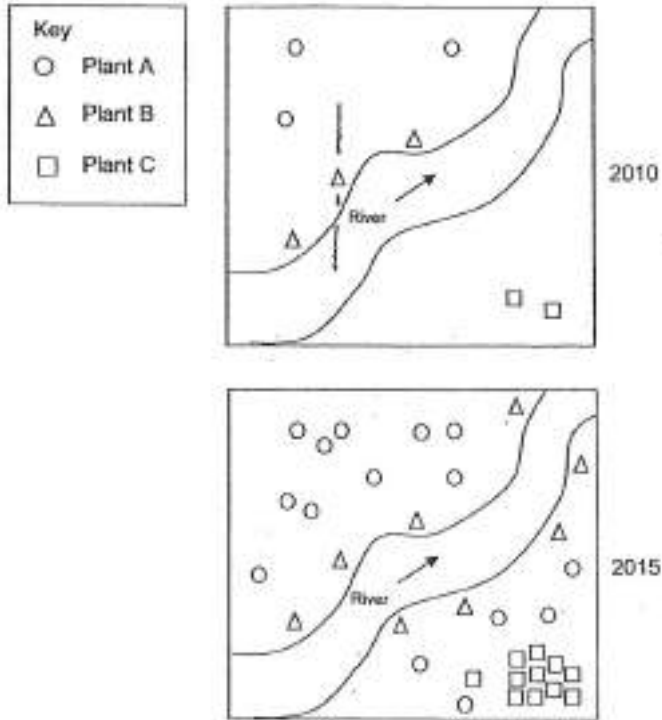
[Remove From Test](#)

### Question 3

Primary 5 Science » Primary 5 Science (Term 4)

2 pts

The diagrams below show the change in the number of three different types of plants in an area from 2010 to 2015. The arrow in the diagrams indicates the wind direction and direction of water flow.



Based on the diagrams above, which one of the following shows the correct method of dispersal for each type of plant?

- A)
 

Plant A ○	Plant B △	Plant C □
--------------	--------------	--------------

By wind	By animals	By splitting
---------	------------	--------------
- B)
 

Plant A ○	Plant B △	Plant C □
--------------	--------------	--------------

By wind	By water	By animals
---------	----------	------------
- ✓ C)
 

Plant A ○	Plant B △	Plant C □
--------------	--------------	--------------

By animals	By water	By splitting
------------	----------	--------------
- D)
 

Plant A ○	Plant B △	Plant C □
--------------	--------------	--------------

By animals	By splitting	By water
------------	--------------	----------

Question Type: Multiple Choice  
 Randomize Answers: No  
 Date Added: Tue 27th Jul 2021

Last Modified: N/A  
QID#: 28,531,139

[Answers](#) | [Edit](#) | [Duplicate](#) | [Used In](#) | [Reorder](#)

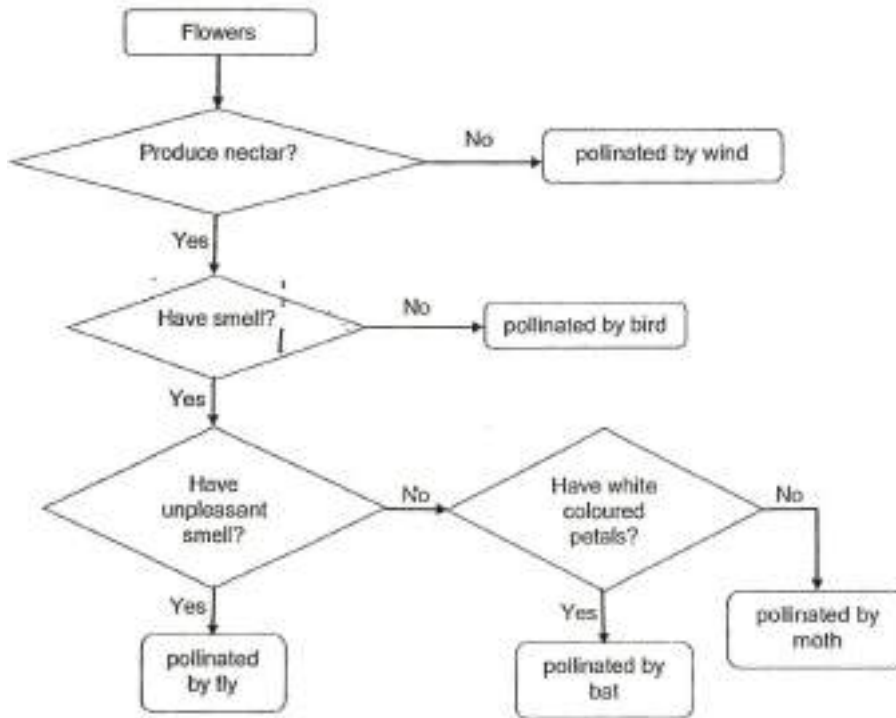
[Remove From Test](#)

## Question 4

Primary 5 Science » Primary 5 Science (Term 4)

2 pts

Study the flowchart below. It describes the general characteristics of the flowers that are pollinated by different agents.



Plant X has white flowers which produce a sweet fragrance. Based on the information given in the flowchart, which agent is most likely to pollinate the flowers of plant X?

- ✓ A) bat
- B) bird
- C) wind
- D) moth

Question Type: Multiple Choice  
Randomize Answers: No  
Date Added: Tue 27th Jul 2021  
Last Modified: N/A  
QID#: 28,531,140

[Answers](#) | [Edit](#) | [Duplicate](#) | [Used In](#) | [Reorder](#)

[Remove From Test](#)

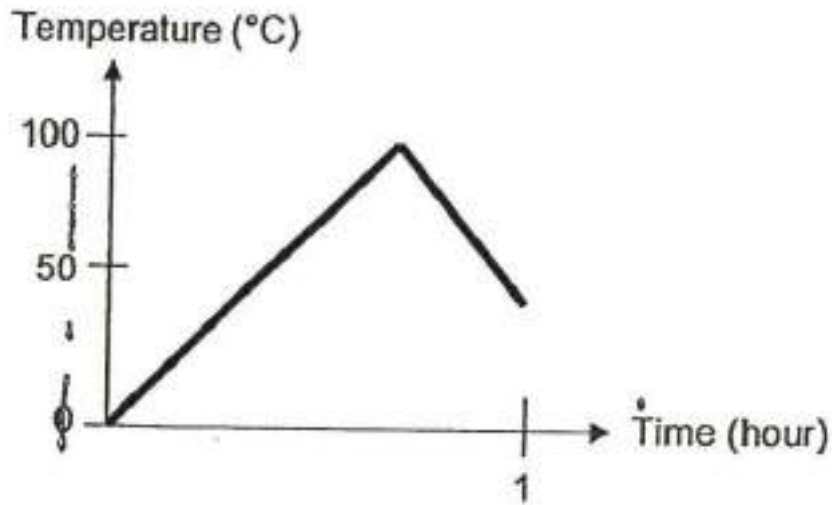
## Question 5

Primary 5 Science » Primary 5 Science (Term 4)

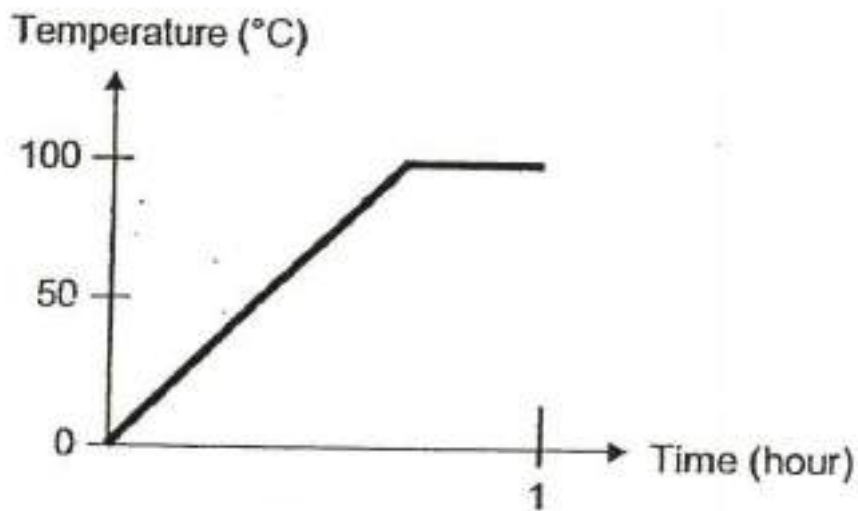
2 pts

Javen heated some water in a beaker that was placed in a room at 30°C. He did this until it boiled. He measured the temperature changes and recorded his results in a graph. Which one of the graphs below shows the changes in temperature correctly?

A)

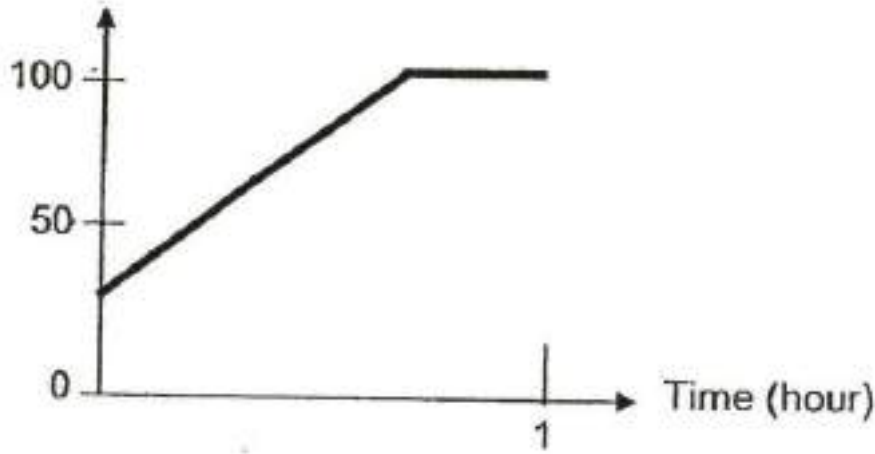


B)

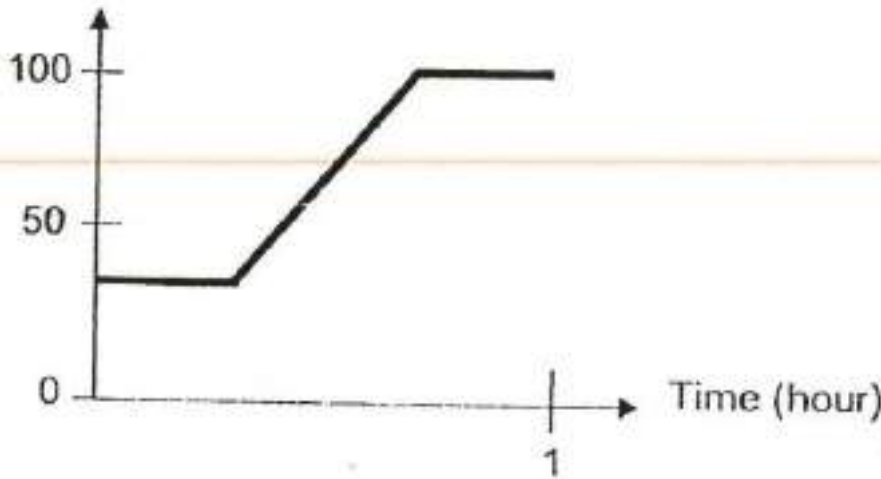


✓ C)

Temperature (°C)



D) Temperature (°C)



**Question Type:** Multiple Choice  
**Randomize Answers:** No  
**Date Added:** Tue 27th Jul 2021  
**Last Modified:** N/A  
**QID#:** 28,531,141

[Answers](#) | [Edit](#) | [Duplicate](#) | [Used In](#) | [Reorder](#)

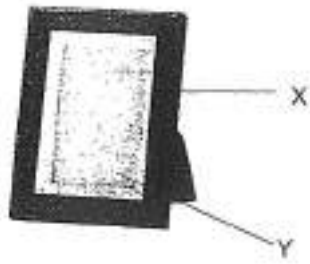
[Remove From Test](#)

**Question 6**

Primary 5 Science » Primary 5 Science (Term 4)

2 pts

Timothy wants to buy a light-weight photo frame.



Which of the following materials should be used to make parts X and Y of the photo frame that he will choose?

- A) 

Part X	Part Y
Iron	Clear Plastic
- B) 

Part X	Part Y
Plastic	Glass
- ✓ C) 

Part X	Part Y
Plastic	Clear Plastic
- D) 

Part X	Part Y
Iron	Glass

**Question Type:** Multiple Choice  
**Randomize Answers:** No  
**Date Added:** Tue 27th Jul 2021  
**Last Modified:** N/A  
**QID#:** 28,531,142

[Answers](#) | [Edit](#) | [Duplicate](#) | [Used In](#) | [Reorder](#)

[Remove From Test](#)

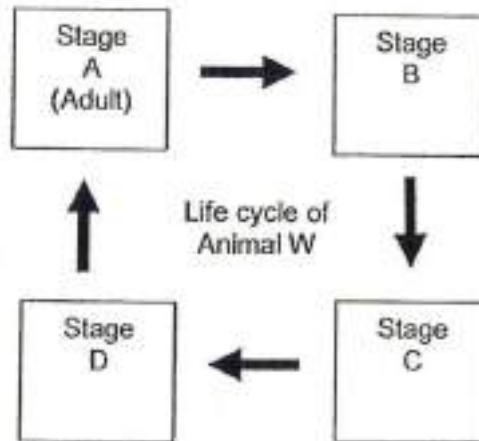
## Question 7

Primary 5 Science » Primary 5 Science (Term 4)

2 pts



The diagram below represents the life cycle of Animal W.



If Stage A is the adult stage, what are Stages B, C and D respectively?

- ✓ A) 

Stage B	Stage C	Stage D
Egg	Larva	Pupa
- B) 

Stage B	Stage C	Stage D
Egg	Pupa	Larva
- C) 

Stage B	Stage C	Stage D
Nymph	Egg	Larva
- D) 

Stage B	Stage C	Stage D
Larva	Egg	Nymph

**Question Type:** Multiple Choice  
**Randomize Answers:** No  
**Date Added:** Tue 27th Jul 2021  
**Last Modified:** N/A  
**QID#:** 28,531,143

[Answers](#) | [Edit](#) | [Duplicate](#) | [Used In](#) | [Reorder](#)

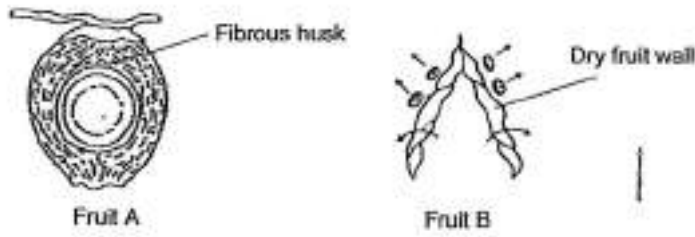
[Remove From Test](#)

## Question 8

Primary 5 Science » Primary 5 Science (Term 4)

2 pts

Compare the two fruits shown in the diagram below.



Based on the diagram given above, which one of the following correctly describes the characteristics of Fruit A and Fruit B in the dispersal of their seeds?

- A) 

<b>Fruit A</b>	<b>Fruit B</b>
The fibrous husk allows it to trap air to float on water.	Dry fruit wall attracts animals to eat the seeds
- B) 

<b>Fruit A</b>	<b>Fruit B</b>
The fibrous husk protects it when dropped from the tree.	Dry fruit wall attracts animals to eat the seeds.
- ✓ C) 

<b>Fruit A</b>	<b>Fruit B</b>
The fibrous husk allows it to trap air to float on water.	Dry fruit wall splits open when ripe.
- D) 

<b>Fruit A</b>	<b>Fruit B</b>
The fibrous husk protects it when dropped from the tree.	Dry fruit wall splits open when ripe.

Question Type: Multiple Choice  
 Randomize Answers: No  
 Date Added: Tue 27th Jul 2021  
 Last Modified: N/A  
 QID#: 28,531,144

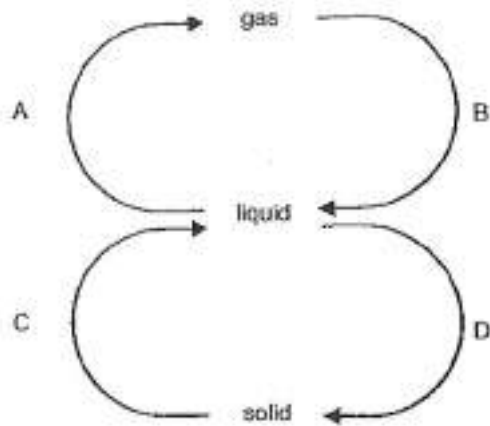
[Answers](#) | 
 [Edit](#) | 
 [Duplicate](#) | 
 [Used In](#) | 
 [Reorder](#)
[Remove From Test](#)

## Question 9

Primary 5 Science » Primary 5 Science (Term 4)

2 pts

The diagram below shows four processes of how water changes from one state to another.



Which one of the following is correct?

- A)  Processes that involve heat loss  
A and C
- B)  A and D
- ✓ C)  B and D
- D)  C and D

**Question Type:** Multiple Choice  
**Randomize Answers:** No  
**Date Added:** Tue 27th Jul 2021  
**Last Modified:** N/A  
**QID#:** 28,531,145

[Answers](#) | [Edit](#) | [Duplicate](#) | [Used In](#) | [Reorder](#)

[Remove From Test](#)

## Question 10

Primary 5 Science » Primary 5 Science (Term 4)

2 pts

Which one of the following sets of characteristics can be passed down from parent to young?

- A) Height, fingerprints and type of earlobes
- B) Colour blindness, football skills and type of thumb
- ✓ C) Type of earlobes, ability to roll tongue and dimples
- D) Dimples, ability to roll tongue and length of fingernails

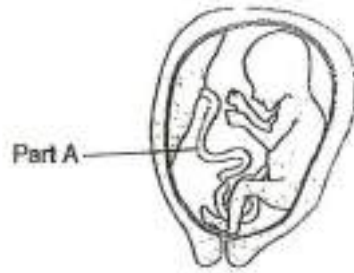
**Question Type:** Multiple Choice  
**Randomize Answers:** No  
**Date Added:** Tue 27th Jul 2021  
**Last Modified:** N/A  
**QID#:** 28,531,147

### Question 11

Primary 5 Science » Primary 5 Science (Term 4)

2 pts

The diagram below shows a developing baby in the female reproductive system.



Which of the following statement(s) about part A below is/are correct?

- A It sends oxygen from the mother to the developing baby.
- B It sends nutrients from the mother to the developing baby.
- C It sends carbon dioxide from the mother to the developing baby.

- ✓ A) A and B only
- B) B and C only
- C) A and C only
- D) A, B and C

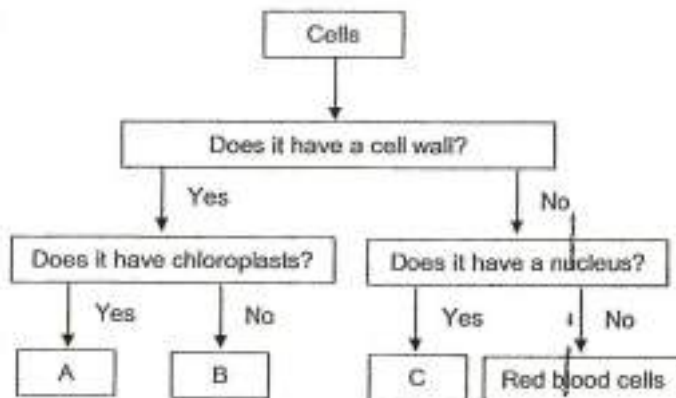
Question Type: Multiple Choice  
 Randomize Answers: No  
 Date Added: Tue 27th Jul 2021  
 Last Modified: N/A  
 QID#: 28,531,149

### Question 12

Primary 5 Science » Primary 5 Science (Term 4)

2 pts

Jim observed and classified three types of cells using the flow chart shown below.



Based on the above classification, what can cells A, B and C be?

- A) 

A	B	C
---	---	---

leaf cells	root cells	stem cells
------------	------------	------------

B)

A	B	C
stem cells	leaf cells	root cells

C)

A	B	C
root cells	leaf cells	cheek cells

✓ D)

A	B	C
leaf cells	root cells	cheek cells

**Question Type:** Multiple Choice  
**Randomize Answers:** No  
**Date Added:** Tue 27th Jul 2021  
**Last Modified:** N/A  
**QID#:** 28,531,151

[Answers](#) | [Edit](#) | [Duplicate](#) | [Used In](#) | [Reorder](#)

[Remove From Test](#)

## Question 13

Primary 5 Science » Primary 5 Science (Term 4)

2 pts

Four pupils were sharing how they use electricity in their homes. Below are their inputs:

Pupil A	I use the fan instead of the air-conditioner when I sleep.
Pupil B	I check that the tap is completely turned off after my shower.
Pupil C	I switch off the television when no one is watching.
Pupil D	I sleep with the lights on in my bedroom.

Which of the students are helping to conserve electricity?

- ✓ A) A and C only  
 B) B and D only  
 C) A, B and C  
 D) B, C and D

**Question Type:** Multiple Choice  
**Randomize Answers:** No  
**Date Added:** Tue 27th Jul 2021  
**Last Modified:** N/A  
**QID#:** 28,531,152

[Answers](#) | [Edit](#) | [Duplicate](#) | [Used In](#) | [Reorder](#)

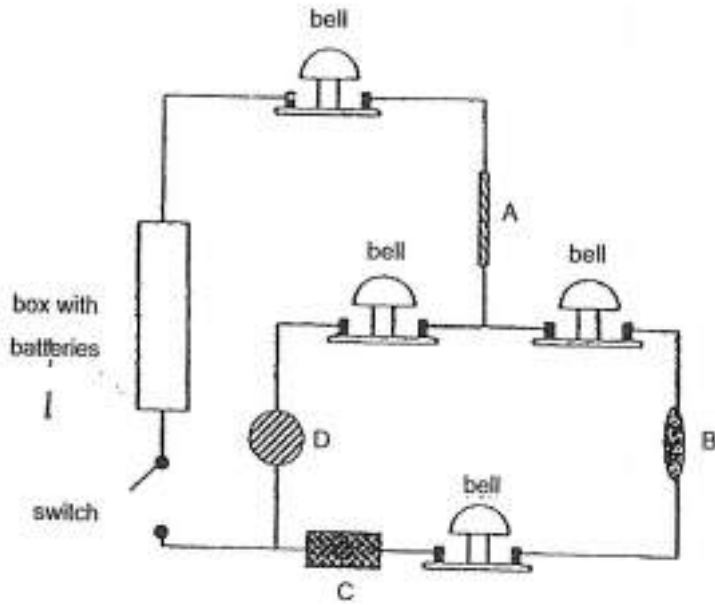
[Remove From Test](#)

## Question 14

Primary 5 Science » Primary 5 Science (Term 4)

2 pts

One of the objects, A, B, C or D, in the circuit below is an insulator of electricity.



When the switch is closed, only three bells in the circuit rang. Which one of the four objects is an insulator of electricity?

- A) A
- B) B
- C) C
- ✓ D) D

Question Type: Multiple Choice  
 Randomize Answers: No  
 Date Added: Tue 27th Jul 2021  
 Last Modified: N/A  
 QID#: 28,531,153

[Answers](#) | 
 [Edit](#) | 
 [Duplicate](#) | 
 [Used In](#) | 
 [Reorder](#)

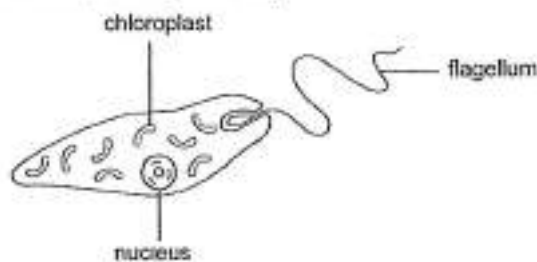
[Remove From Test](#)

### Question 15

Primary 5 Science » Primary 5 Science (Term 4)

2 pts

The diagram below shows a single-celled organism that lives in the pond. The flagellum helps the cell to move about in the water. It has been observed that this cell moves near the surface of the pond only in the day.



Which one of the following best explains why the cell needs to move to the surface in the day?

- A) To trap heat to make food.
- ✓ B) To trap sunlight to make food.
- C) To look for food near the surface.
- D) To gain heat from the sun to keep warm.

**Question Type:** Multiple Choice  
**Randomize Answers:** No  
**Date Added:** Tue 27th Jul 2021  
**Last Modified:** N/A  
**QID#:** 28,531,154

[Answers](#) | 
 [Edit](#) | 
 [Duplicate](#) | 
 [Used In](#) | 
 [Reorder](#)

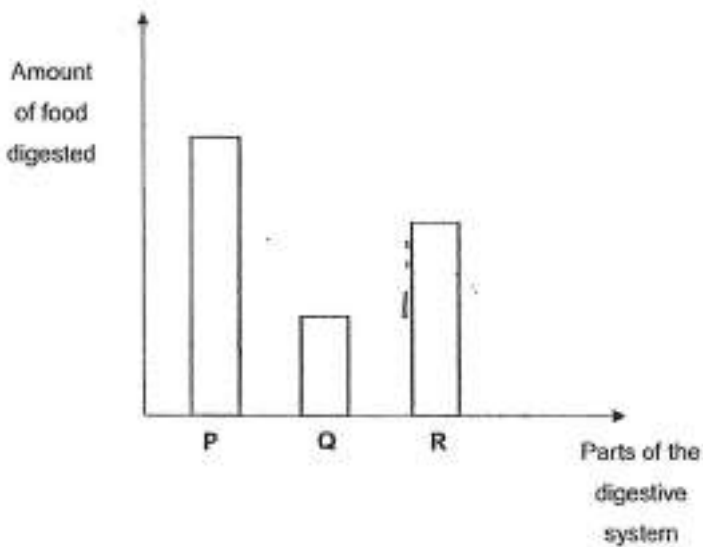
[Remove From Test](#)

## Question 16

Primary 5 Science » Primary 5 Science (Term 4)

2 pts

Joshua ate some food for dinner. The bar graph below shows the amount of food digested at different parts P, Q and R of his digestive system.



Which one of the following shows the correct parts of the digestive system?

- A) 

P	Q	R
Mouth	Stomach	Small Intestine
- B) 

P	Q	R
Stomach	Small Intestine	Mouth
- C) 

P	Q	R
Stomach	Mouth	Small Intestine
- ✓ D) 

P	Q	R
Small Intestine	Mouth	Stomach

Question Type: Multiple Choice  
 Randomize Answers: No  
 Date Added: Tue 27th Jul 2021  
 Last Modified: N/A  
 QID#: 28,531,155

Answers | Edit | Duplicate | Used In | Reorder

Remove From Test

## Question 17

Primary 5 Science » Primary 5 Science (Term 4)

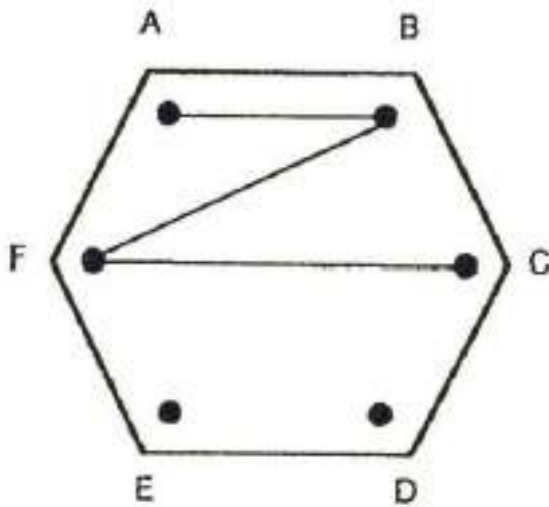
2 pts

Ryan made a circuit card with metal clips at each of the points A, B, C, D, E and F. Some of the clips are connected by wires behind the card. He connected a circuit tester to the different points on the card and recorded his findings in the table below.

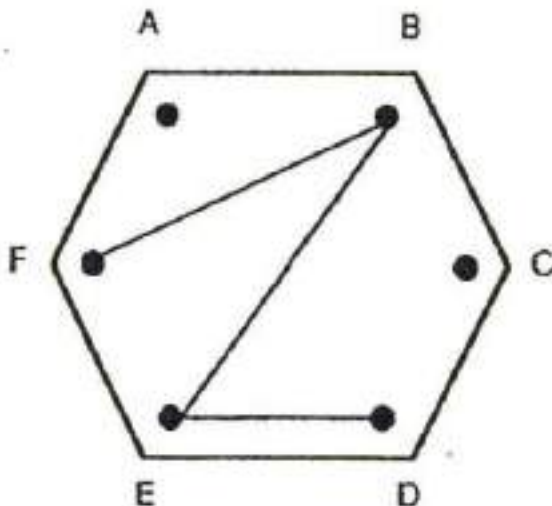
Points tested	Does the bulb light up?
A and D	No
B and E	Yes
C and F	No
E and F	Yes

Which one of the following is the circuit card that Ryan made?

A)

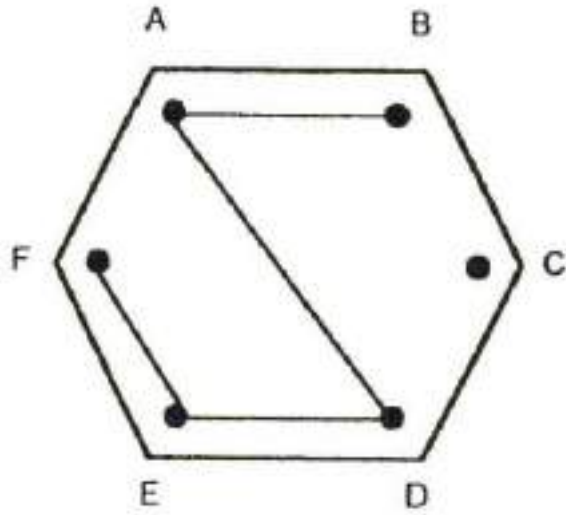


✓ B)

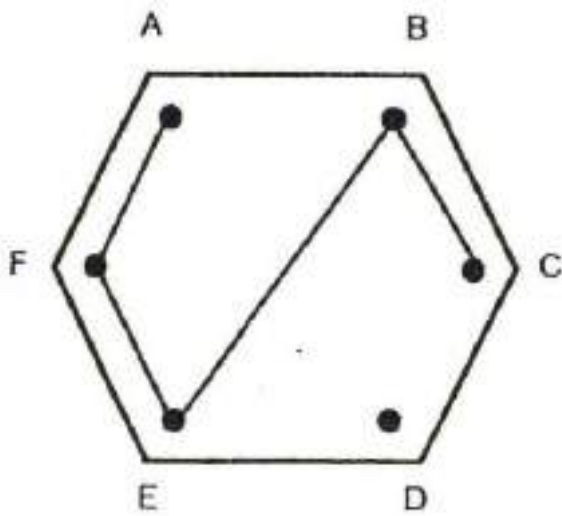




C)



D)



**Question Type:** Multiple Choice  
**Randomize Answers:** No  
**Date Added:** Tue 27th Jul 2021  
**Last Modified:** N/A  
**QID#:** 28,531,156

[Answers](#) | [Edit](#) | [Duplicate](#) | [Used In](#) | [Reorder](#)

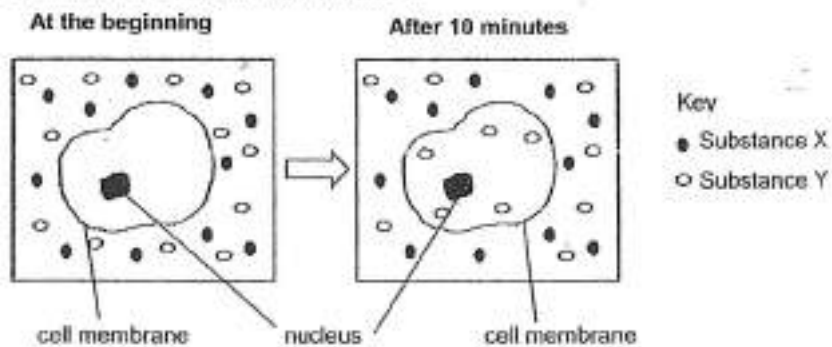
[Remove From Test](#)

### Question 18

Primary 5 Science » Primary 5 Science (Term 4)

2 pts

The diagram below shows what happens before and after a cell is placed in a container filled with substances X and Y.



Based on the diagram above, which one of the following statements best explains the above observation?

- A) The nucleus allows only substance Y to move into the cell.
- B) The nucleus allows substance X and Y to move into the cell.
- ✓ C) The cell membrane allows only substance Y to move into the cell.
- D) The cell membrane allows only substance X to move into the cell.

**Question Type:** Multiple Choice  
**Randomize Answers:** No  
**Date Added:** Tue 27th Jul 2021  
**Last Modified:** N/A  
**QID#:** 28,531,157

[Answers](#) | [Edit](#) | [Duplicate](#) | [Used In](#) | [Reorder](#)

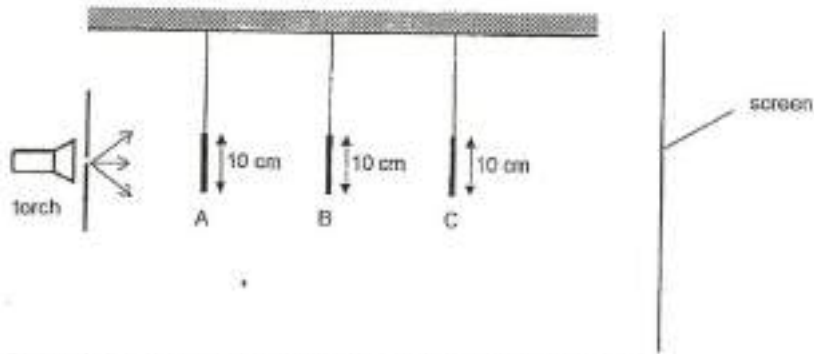
[Remove From Test](#)

## Question 19

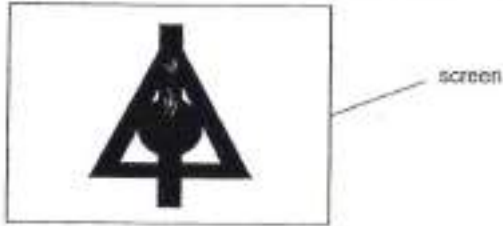
Primary 5 Science » Primary 5 Science (Term 4)

2 pts

The set-up below shows light from a torch shining on three wooden objects A, B and C. They are placed at different distances from the torch.



The diagram below shows the shadow of the objects formed on the screen.



What are objects A, B and C?

- A)
 

A	B	C
- B)
 

--	--	--
- ✓ C)
 

--	--	--
- D)
 

--	--	--

**Question Type:** Multiple Choice  
**Randomize Answers:** No  
**Date Added:** Tue 27th Jul 2021  
**Last Modified:** N/A  
**QID#:** 28,531,158

[Answers](#) | [Edit](#) | [Duplicate](#) | [Used In](#) | [Reorder](#)

[Remove From Test](#)

## Question 20

Primary 5 Science » Primary 5 Science (Term 4)

2 pts

Chris wanted to find out how the exposed surface area of a container affects the rate of evaporation of water from it. The table below shows several possible set-ups.

	Exposed surface area of the container (cm <sup>2</sup> )	Temperature of surrounding (°C)	Speed of wind (km/h)
A	90	40	10
B	90	25	10
C	50	40	15
D	50	25	10

Which two set-ups can be used to carry out a fair experiment?

- A) A and B only
- B) A and C only
- ✓ C) B and D only
- D) C and D only

**Question Type:** Multiple Choice  
**Randomize Answers:** No  
**Date Added:** Tue 27th Jul 2021  
**Last Modified:** N/A  
**QID#:** 28,531,159

[Answers](#) | [Edit](#) | [Duplicate](#) | [Used In](#) | [Reorder](#)

[Remove From Test](#)

## Question 21

Primary 5 Science » Primary 5 Science (Term 4)

2 pts

Study the activities listed below.

- A Take longer showers.
- B Use water from rinsing the clothes to wash the toilets.
- C Repair leaks from water tap slowly when you have the time.
- D Wash vegetables in a tub of water instead of under a running tap.

Which of the above activities help to conserve water?

- A) A and B only
- B) B and C only
- C) B and D only



D) C and D only

**Question Type:** Multiple Choice  
**Randomize Answers:** No  
**Date Added:** Tue 27th Jul 2021  
**Last Modified:** N/A  
**QID#:** 28,531,160

[Answers](#) | [Edit](#) | [Duplicate](#) | [Used In](#) | [Reorder](#)

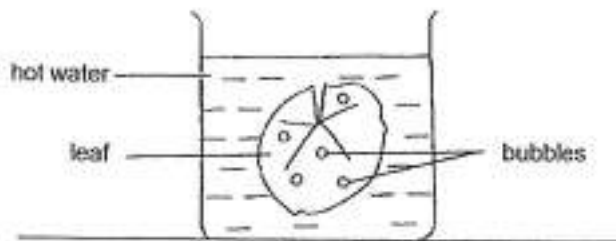
[Remove From Test](#)

## Question 22

Primary 5 Science » Primary 5 Science (Term 4)

2 pts

Peter plucked a leaf from a plant and placed it in a beaker of hot water.



He observed that there were more bubbles on the lower surface than on the upper surface of the leaf.

Which one of the following conclusions is correct?

- A) The leaf has openings on the upper surface but not on the lower surface.
- B) The leaf has more openings on the lower surface than on the upper surface.
- C) Air enters the lower surface of the leaf and escapes through the upper surface.
- D) Bubbles form in the water and land equally on the upper and lower surfaces of the leaf.

**Question Type:** Multiple Choice  
**Randomize Answers:** No  
**Date Added:** Tue 27th Jul 2021  
**Last Modified:** N/A  
**QID#:** 28,531,161

[Answers](#) | [Edit](#) | [Duplicate](#) | [Used In](#) | [Reorder](#)

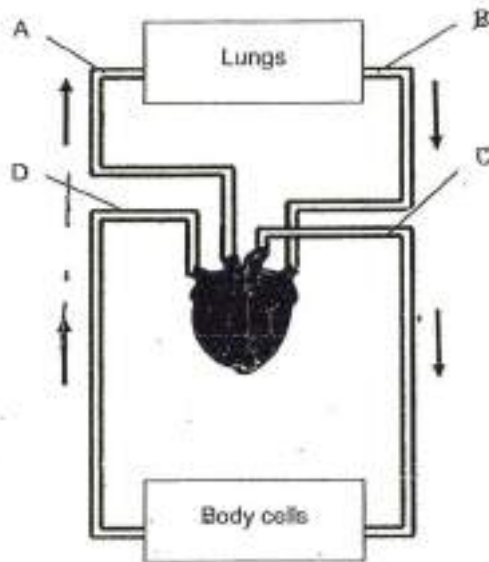
[Remove From Test](#)

## Question 23

Primary 5 Science » Primary 5 Science (Term 4)

2 pts

The diagram below shows the direction of blood flow in a human body. A, B, C and D are blood vessels.



Which two blood vessels carry blood rich in carbon dioxide?

- A) A and C
- ✓ B) A and D
- C) B and C
- D) B and D

**Question Type:** Multiple Choice  
**Randomize Answers:** No  
**Date Added:** Tue 27th Jul 2021  
**Last Modified:** N/A  
**QID#:** 28,531,162

[Answers](#) | [Edit](#) | [Duplicate](#) | [Used In](#) | [Reorder](#)

[Remove From Test](#)

## Question 24

Primary 5 Science » Primary 5 Science (Term 4)

2 pts

- A) 5°C
- B) 10°C
- C) 15°C
- ✓ D) 55°C

**Question Type:** Multiple Choice  
**Randomize Answers:** No  
**Date Added:** Tue 27th Jul 2021  
**Last Modified:** N/A  
**QID#:** 28,531,163

[Answers](#) | [Edit](#) | [Duplicate](#) | [Used In](#) | [Reorder](#)

[Remove From Test](#)

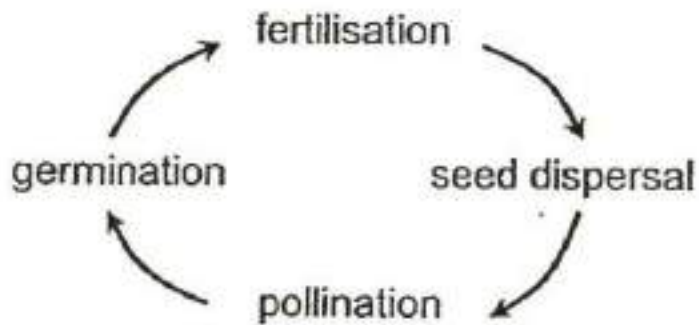
**Question 25**

Primary 5 Science » Primary 5 Science (Term 4)

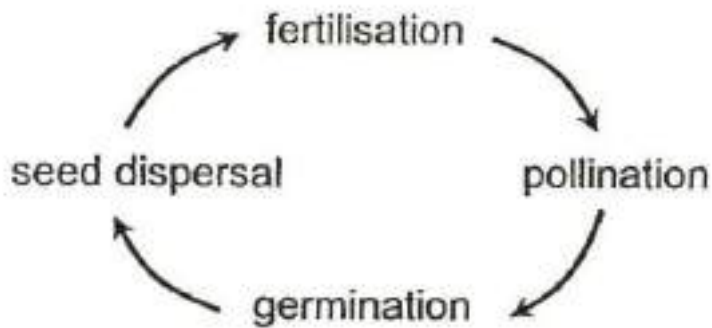
2 pts

Which one of the following shows the correct sequence of processes in the reproduction of a flowering plant?

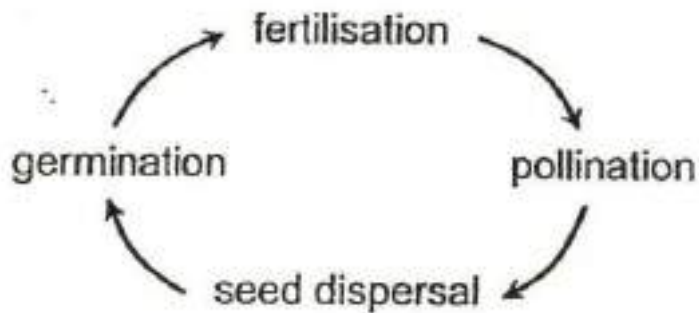
A)



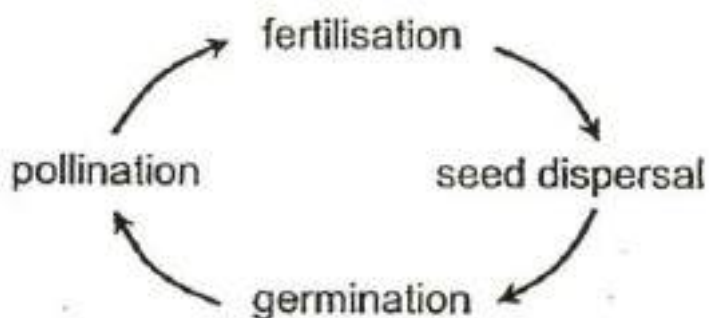
B)



C)



✓ D)



**Question Type:** Multiple Choice  
**Randomize Answers:** No  
**Date Added:** Tue 27th Jul 2021  
**Last Modified:** N/A  
**QID#:** 28,531,164

[Answers](#) | [Edit](#) | [Duplicate](#) | [Used In](#) | [Reorder](#)

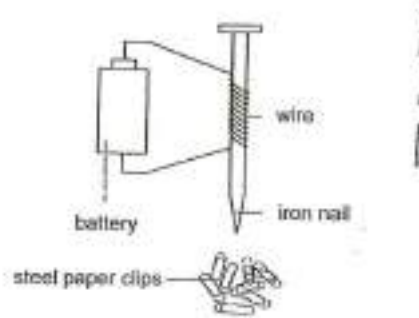
[Remove From Test](#)

## Question 26

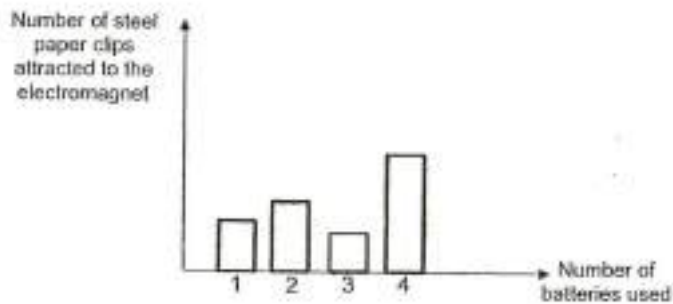
Primary 5 Science » Primary 5 Science (Term 4)

0.3 pts

Christine wanted to find out how the number of batteries used affects the number of steel paper clips attracted to the electromagnet. She set up the experiment as shown below.



The results of her experiment was shown in the bar graph below.



Which of the following variables had to be changed or kept the same so that the experiment conducted was a fair test? Indicate your choice with a tick (✓) in the table provided below. [1]

Variable: The number of batteries used

- A) Kept the same  
 ✓ B) Changed

**Question Type:** Multiple Choice  
**Randomize Answers:** No  
**Date Added:** Tue 27th Jul 2021  
**Last Modified:** N/A  
**QID#:** 28,531,165

[Answers](#) | [Edit](#) | [Duplicate](#) | [Used In](#) | [Reorder](#)

[Remove From Test](#)

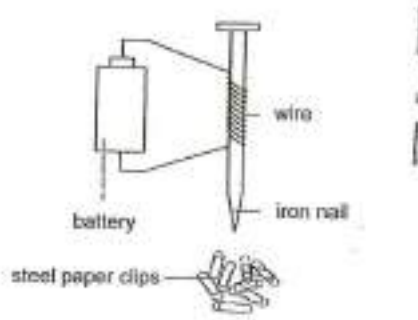
## Question 27

Primary 5 Science » Primary 5 Science (Term 4)

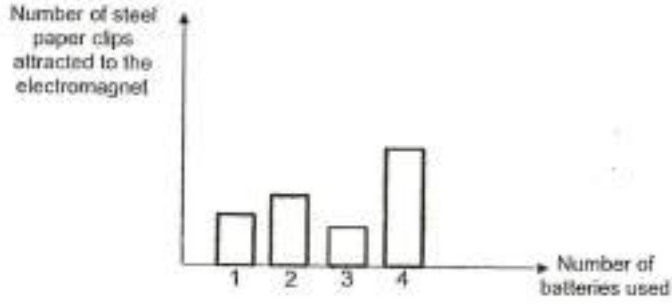
0.2 pts



Christine wanted to find out how the number of batteries used affects the number of steel paper clips attracted to the electromagnet. She set up the experiment as shown below.



The results of her experiment was shown in the bar graph below.



Which of the following variables had to be changed or kept the same so that the experiment conducted was a fair test? Indicate your choice with a tick (✓) in the table provided below. [1]

Variable: The distance between the electromagnet and the paper clips

- ✓ A) Kept the same
- B) Changed

Question Type: Multiple Choice  
 Randomize Answers: No  
 Date Added: Tue 27th Jul 2021  
 Last Modified: N/A  
 QID#: 28,531,150

[Answers](#) | 
 [Edit](#) | 
 [Duplicate](#) | 
 [Used In](#) | 
 [Reorder](#)

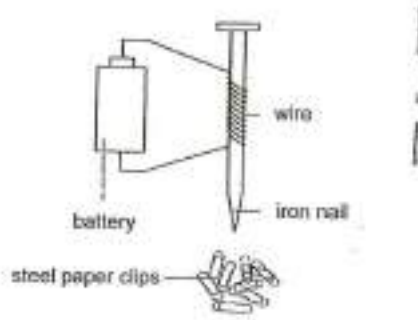
[Remove From Test](#)

## Question 28

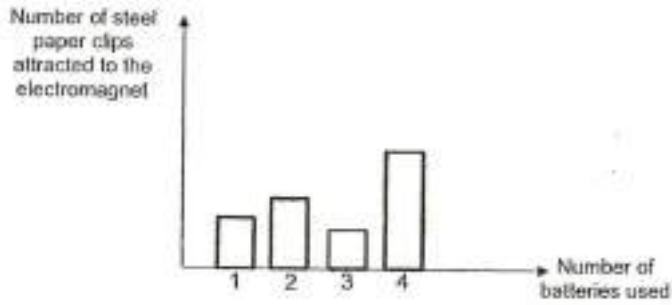
Primary 5 Science » Primary 5 Science (Term 4)

0.2 pts

Christine wanted to find out how the number of batteries used affects the number of steel paper clips attracted to the electromagnet. She set up the experiment as shown below.



The results of her experiment was shown in the bar graph below.



Which of the following variables had to be changed or kept the same so that the experiment conducted was a fair test? Indicate your choice with a tick (✓) in the table provided below. [1]

Variable: The number of coils around the iron nail

- ✓ A) Kept the same
- B) Changed

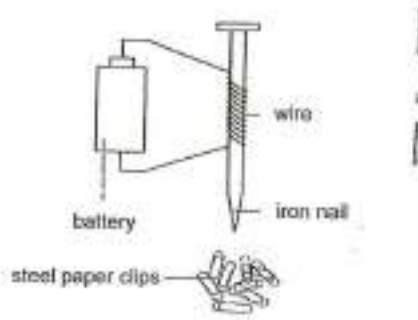
Question Type: Multiple Choice  
 Randomize Answers: No  
 Date Added: Tue 27th Jul 2021  
 Last Modified: N/A  
 QID#: 28,531,148

[Answers](#) | 
 [Edit](#) | 
 [Duplicate](#) | 
 [Used In](#) | 
 [Reorder](#)
[Remove From Test](#)

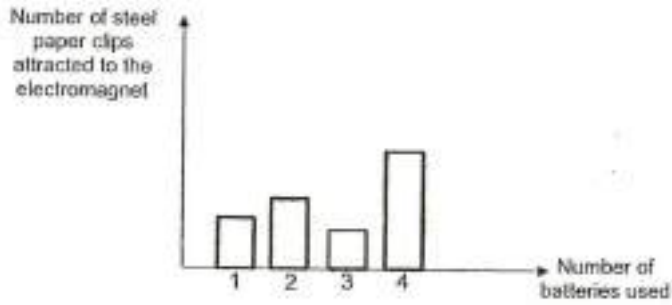
## Question 29

Primary 5 Science » Primary 5 Science (Term 4) 0.3 pts

Christine wanted to find out how the number of batteries used affects the number of steel paper clips attracted to the electromagnet. She set up the experiment as shown below.



The results of her experiment was shown in the bar graph below.



Which of the following variables had to be changed or kept the same so that the experiment conducted was a fair test? Indicate your choice with a tick (✓) in the table provided below. [1]

Variable: The type of paper clips

- ✓ A) Kept the same
- B) Changed

Question Type: Multiple Choice  
 Randomize Answers: No  
 Date Added: Tue 27th Jul 2021  
 Last Modified: N/A  
 QID#: 28,531,146

[Answers](#) | 
 [Edit](#) | 
 [Duplicate](#) | 
 [Used In](#) | 
 [Reorder](#)

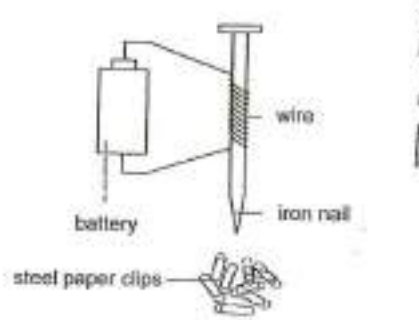
[Remove From Test](#)

### Question 30

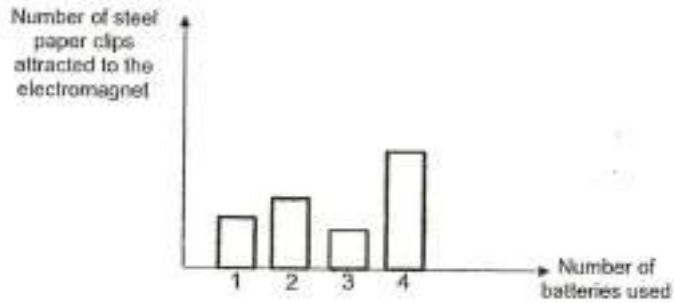
Primary 5 Science » Primary 5 Science (Term 4)

0 pts

Christine wanted to find out how the number of batteries used affects the number of steel paper clips attracted to the electromagnet. She set up the experiment as shown below.



The results of her experiment was shown in the bar graph below.



If there were no errors made, what should Christine's conclusion be? (1 mark)

*This question is designed for extended answers that parent/ teacher will have to assign and guide child to attempt after the test has been completed.*

*Grading: This question type is not graded on this system and will not affect the final score as it was designed in such a way that it requires manual assistance.*

Question Type: Essay  
 Date Added: Tue 27th Jul 2021  
 Last Modified: N/A  
 QID#: 28,531,178

**Correctly answered feedback**

**As the number of batteries used increases, the number of paper clips attracted to the electromagnet increases.**

**Incorrectly answered feedback**

**As the number of batteries used increases, the number of paper clips attracted to the electromagnet increases.**

[Answers](#) | [Edit](#) | [Duplicate](#) | [Used In](#) | [Reorder](#)

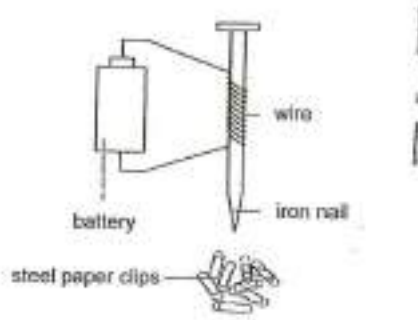
[Remove From Test](#)

## Question 31

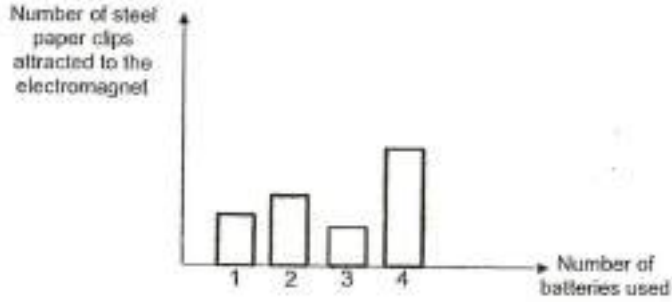
Primary 5 Science » Primary 5 Science (Term 4)

0 pts

Christine wanted to find out how the number of batteries used affects the number of steel paper clips attracted to the electromagnet. She set up the experiment as shown below.



The results of her experiment was shown in the bar graph below.



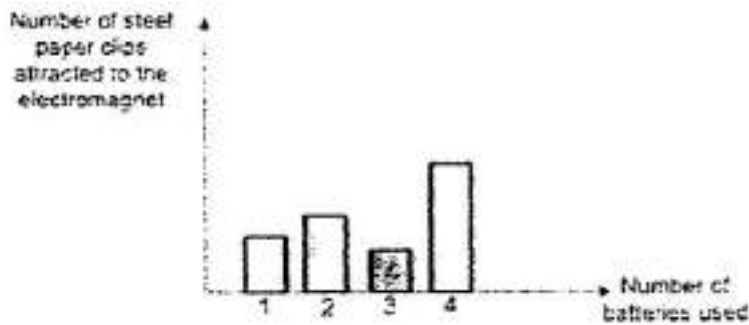
Christine's teacher said that she had made one error in recording the results of her experiment. On the bar graph above, shade the bar where she had most likely made the error. [1]

*This question is designed for extended answers that parent/ teacher will have to assign and guide child to attempt after the test has been completed.*

*Grading: This question type is not graded on this system and will not affect the final score as it was designed in such a way that it requires manual assistance.*

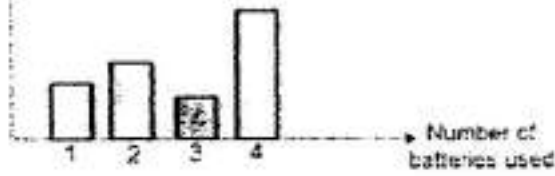
Question Type: Essay  
 Date Added: Tue 27th Jul 2021  
 Last Modified: N/A  
 QID#: 28,531,187

**Correctly answered feedback**



**Incorrectly answered feedback**

Number of steel paper clips attracted to the electromagnet



Answers | Edit | Duplicate | Used In | Reorder

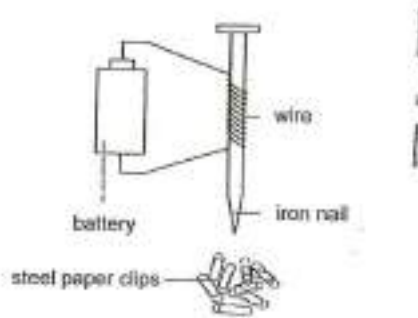
Remove From Test

### Question 32

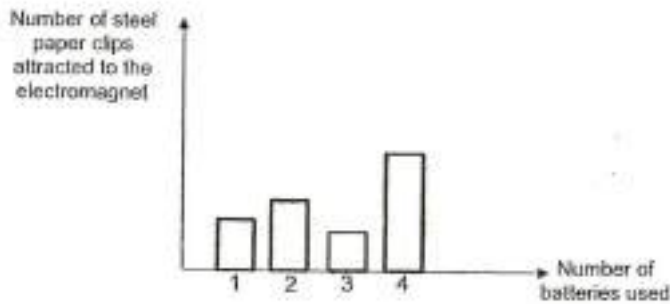
Primary 5 Science » Primary 5 Science (Term 4)

1 pt

Christine wanted to find out how the number of batteries used affects the number of steel paper clips attracted to the electromagnet. She set up the experiment as shown below.



The results of her experiment was shown in the bar graph below.



Besides iron, name another material that the nail can be made of.

Accepted answers:

✓ Steel

Question Type: Free Text  
 Date Added: Tue 27th Jul 2021  
 Last Modified: N/A  
 QID#: 28,531,201

Answers | Edit | Duplicate | Used In | Reorder

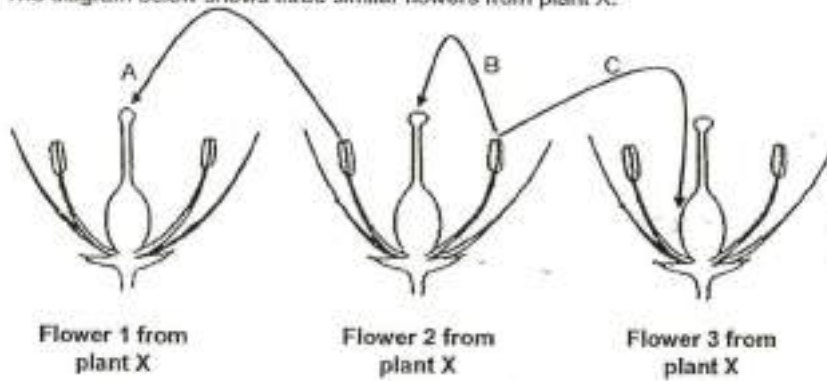
Remove From Test

### Question 33

Primary 5 Science » Primary 5 Science (Term 4)

2 pts

The diagram below shows three similar flowers from plant X.



If the arrow(s) indicate(s) the movement of pollen grains, which arrow(s) correctly show(s) the process of pollination taking place?

- A) A only
- B) C only
- ✓ C) A and B only
- D) A, B and C

**Question Type:** Multiple Choice  
**Randomize Answers:** No  
**Date Added:** Tue 27th Jul 2021  
**Last Modified:** N/A  
**QID#:** 28,531,166

[Answers](#) | [Edit](#) | [Duplicate](#) | [Used In](#) | [Reorder](#)

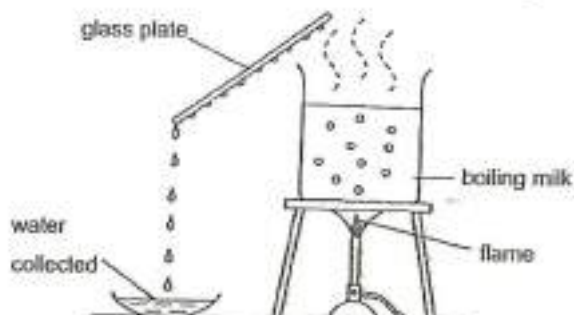
[Remove From Test](#)

## Question 34

Primary 5 Science » Primary 5 Science (Term 4)

2 pts

Timothy used the set-up below to collect water from boiling milk.



Which one of the following could Timothy do if he wants to collect the most amount of water within the shortest period of time?

- A) Add ice cubes to the boiling milk
- B) Use a warm glass plate to collect the water
- C) Switch off the flame when he sees bubbles in the beaker
- ✓ D) Change the glass plate to a steel plate that had just been removed from the fridge to collect water

**Question Type:** Multiple Choice  
**Randomize Answers:** No  
**Date Added:** Tue 27th Jul 2021  
**Last Modified:** N/A  
**QID#:** 28,531,167

[Answers](#) | [Edit](#) | [Duplicate](#) | [Used In](#) | [Reorder](#)

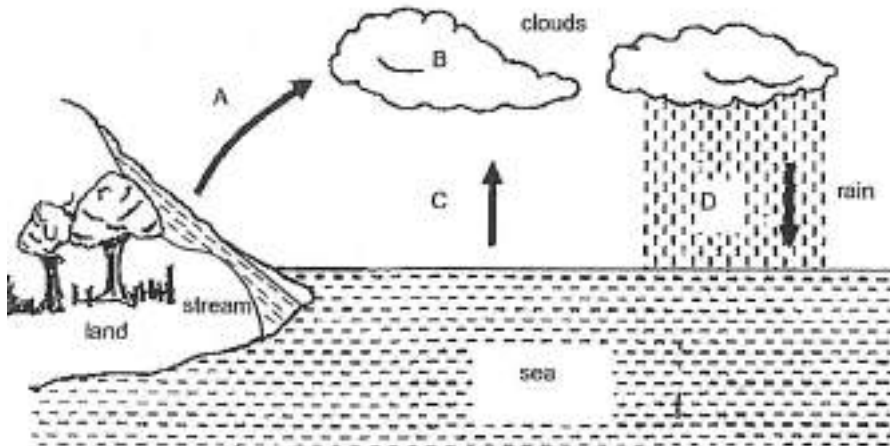
[Remove From Test](#)

### Question 35

Primary 5 Science » Primary 5 Science (Term 4)

2 pts

A, B, C and D are processes/stages in the water cycle.



Which one of the following correctly describe the processes/stages during the water cycle?

- ✓ A) 

Change from liquid to gaseous state	State of water at B	No change in state
A and C	Liquid	D
- B) 

Change from liquid to gaseous state	State of water at B	No change in state
A and B	Gaseous	D
- C) 

Change from liquid to gaseous state	State of water at B	No change in state
C and D	Liquid	B
- D) 

Change from liquid to gaseous state	State of water at B	No change in state
A and C	Gaseous	B

**Question Type:** Multiple Choice  
**Randomize Answers:** No  
**Date Added:** Tue 27th Jul 2021  
**Last Modified:** N/A  
**QID#:** 28,531,168

[Answers](#) | [Edit](#) | [Duplicate](#) | [Used In](#) | [Reorder](#)

[Remove From Test](#)

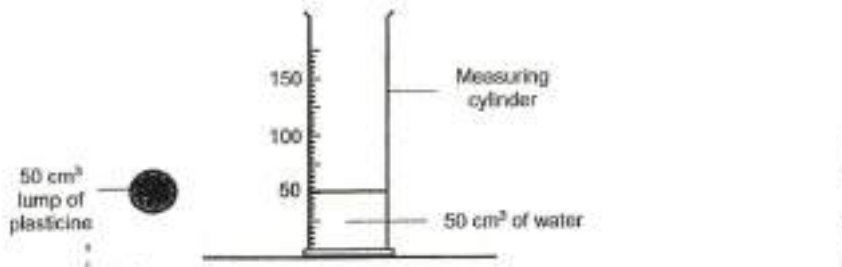
### Question 36

Primary 5 Science » Primary 5 Science (Term 4)

0 pts

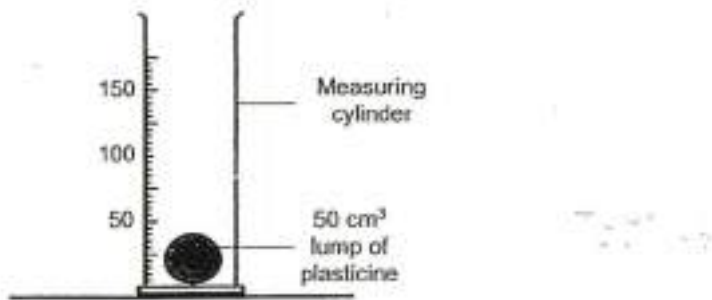


Adi was given a 50 cm<sup>3</sup> lump of plasticine and a measuring cylinder containing 50 cm<sup>3</sup> of water.



He lowered the lump of plasticine into the measuring cylinder of water completely.

Using a ruler and pencil, draw the water level in the diagram below after he had lowered the plasticine completely into the measuring cylinder of water. [1]

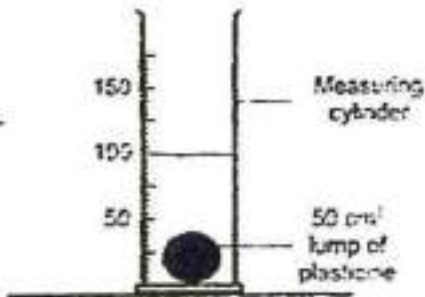


*This question is designed for extended answers that parent/ teacher will have to assign and guide child to attempt after the test has been completed.*

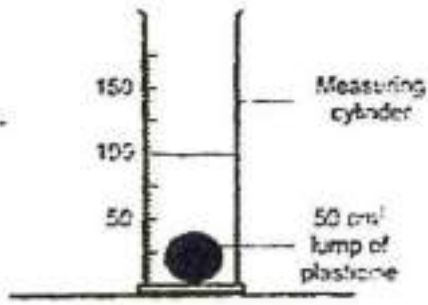
*Grading: This question type is not graded on this system and will not affect the final score as it was designed in such a way that it requires manual assistance.*

Question Type: Essay  
 Date Added: Tue 27th Jul 2021  
 Last Modified: N/A  
 QID#: 28,531,190

**Correctly answered feedback**



**Incorrectly answered feedback**



[Answers](#) | 
 [Edit](#) | 
 [Duplicate](#) | 
 [Used In](#) | 
 [Reorder](#)

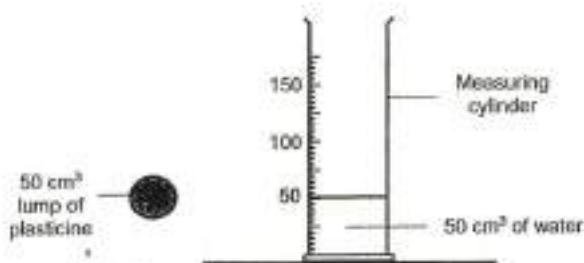
[Remove From Test](#)

## Question 37

Primary 5 Science » Primary 5 Science (Term 4)

0.5 pts

Adli was given a 50 cm<sup>3</sup> lump of plasticine and a measuring cylinder containing 50 cm<sup>3</sup> of water.



He lowered the lump of plasticine into the measuring cylinder of water completely.

Adli then took the plasticine out of the measuring cylinder and flattened it.



State if the following sentence about plasticine is True or False.

The shape of the plasticine can be changed because it is a liquid.

- A) TRUE  
 B) FALSE

**Question Type:** True False  
**Date Added:** Tue 27th Jul 2021  
**Last Modified:** N/A  
**QID#:** 28,531,176

[Answers](#) | 
 [Edit](#) | 
 [Duplicate](#) | 
 [Used In](#) | 
 [Reorder](#)

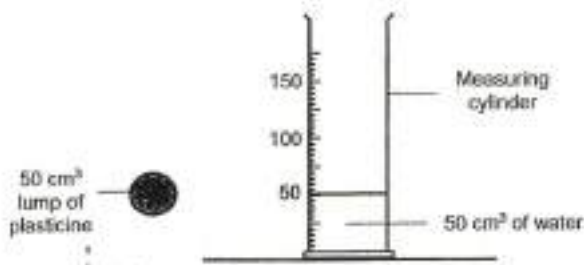
[Remove From Test](#)

## Question 38

Primary 5 Science » Primary 5 Science (Term 4)

2 pts

Adli was given a  $50 \text{ cm}^3$  lump of plasticine and a measuring cylinder containing  $50 \text{ cm}^3$  of water.



He lowered the lump of plasticine into the measuring cylinder of water completely.

Adli then took the plasticine out of the measuring cylinder and flattened it.



He then lowered the flattened plasticine completely into the measuring cylinder containing  $50 \text{ cm}^3$  of water again. What would the reading of the water level be after he had lowered the flattened plasticine completely into the measuring cylinder? Explain your answer. [2]

#### Accepted answers:

- ✓ 100cm cube
- ✓ 100 cm cube
- ✓ 100cm
- ✓ 100 CM

**Question Type:** Free Text  
**Date Added:** Tue 27th Jul 2021  
**Last Modified:** N/A  
**QID#:** 28,531,205

#### Correctly answered feedback

$100 \text{ cm}^3$ . Its volume remains unchanged when shape changes.

#### Incorrectly answered feedback

$100 \text{ cm}^3$ . Its volume remains unchanged when shape changes.

[Answers](#) | [Edit](#) | [Duplicate](#) | [Used In](#) | [Reorder](#)

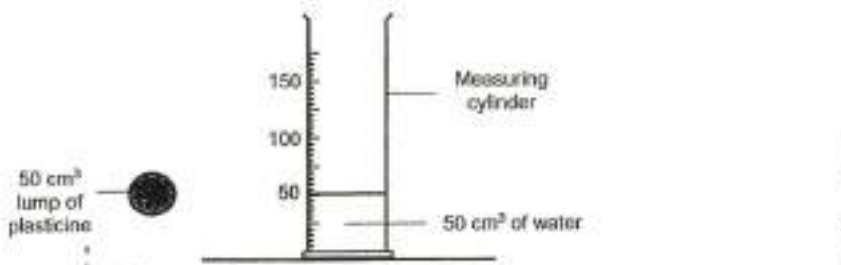
[Remove From Test](#)

## Question 39

Primary 5 Science » Primary 5 Science (Term 4)

0.5 pts

Adi was given a 50 cm<sup>3</sup> lump of plasticine and a measuring cylinder containing 50 cm<sup>3</sup> of water.



He lowered the lump of plasticine into the measuring cylinder of water completely.

Adli then took the plasticine out of the measuring cylinder and flattened it.



State if the following sentence about plasticine is True or False.

Plasticine is matter as it has mass and occupies space.

- ✓ A) TRUE
- B) FALSE

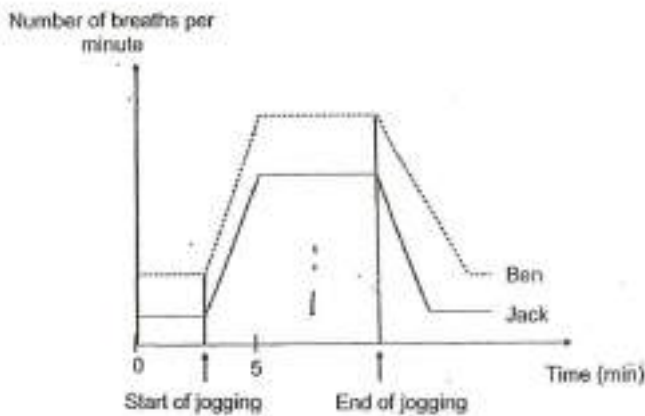
Question Type: True False  
 Date Added: Tue 27th Jul 2021  
 Last Modified: N/A  
 QID#: 28,531,169

[Answers](#) | 
 [Edit](#) | 
 [Duplicate](#) | 
 [Used In](#) | 
 [Reorder](#)
[Remove From Test](#)

### Question 40

Primary 5 Science » Primary 5 Science (Term 4) 0.5 pts

The graph below shows the breathing rates of two boys, Ben and Jack. At first, they were both resting, then they started jogging together and later they stopped jogging together at the same time.



State if the following sentence about Ben's and Jack's breathing rates is True or False.

Jack's breathing rate is higher than Ben's breathing rate during jogging.

- A) TRUE  
 ✓ B) FALSE

**Question Type:** True False  
**Date Added:** Tue 27th Jul 2021  
**Last Modified:** N/A  
**QID#:** 28,531,170

[Answers](#) | [Edit](#) | [Duplicate](#) | [Used In](#) | [Reorder](#)

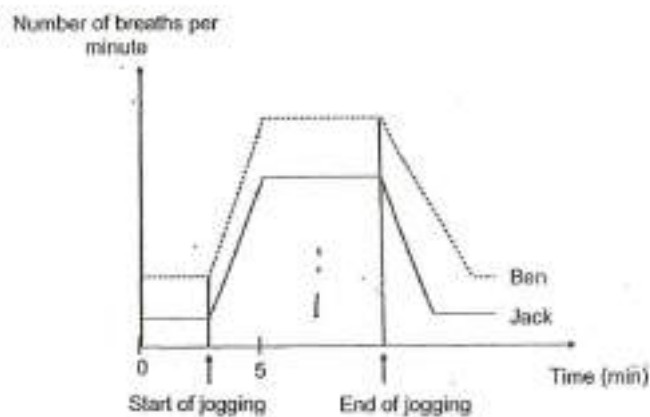
[Remove From Test](#)

## Question 41

Primary 5 Science » Primary 5 Science (Term 4)

0.5 pts

The graph below shows the breathing rates of two boys, Ben and Jack. At first, they were both resting, then they started jogging together and later they stopped jogging together at the same time.



State if the following sentence about Ben's and Jack's breathing rate is True or False.

When they both stopped jogging, Jack's breathing rate returns to normal fast then Ben's breathing rate.

- ✓ A) TRUE  
 B) FALSE

**Question Type:** True False  
**Date Added:** Tue 27th Jul 2021  
**Last Modified:** N/A  
**QID#:** 28,531,171

[Answers](#) | [Edit](#) | [Duplicate](#) | [Used In](#) | [Reorder](#)

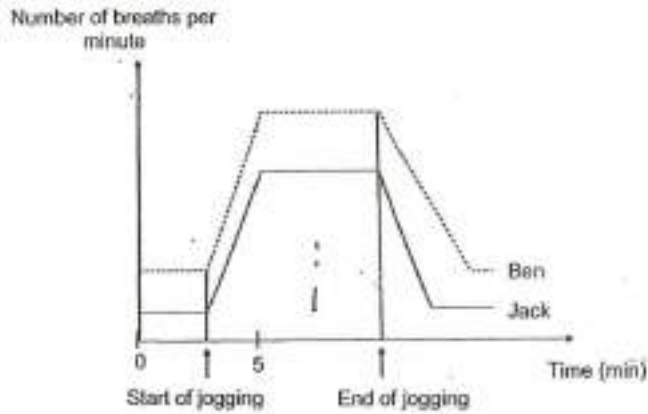
[Remove From Test](#)

## Question 42

Primary 5 Science » Primary 5 Science (Term 4)

1 pt

The graph below shows the breathing rates of two boys, Ben and Jack. At first, they were both resting, then they started jogging together and later they stopped jogging together at the same time.



Name any two human organ systems that are involved when a person is jogging.

**Accepted answers:**

- ✓ Respiratory system and muscular system.
- ✓ respiratory and muscular system
- ✓ Respiratory system and Muscular system
- ✓ Muscular system and respiratory system
- ✓ muscular and respiratory system

**Question Type:** Free Text  
**Date Added:** Tue 27th Jul 2021  
**Last Modified:** N/A  
**QID#:** 28,531,203

[Answers](#) | [Edit](#) | [Duplicate](#) | [Used In](#) | [Reorder](#)

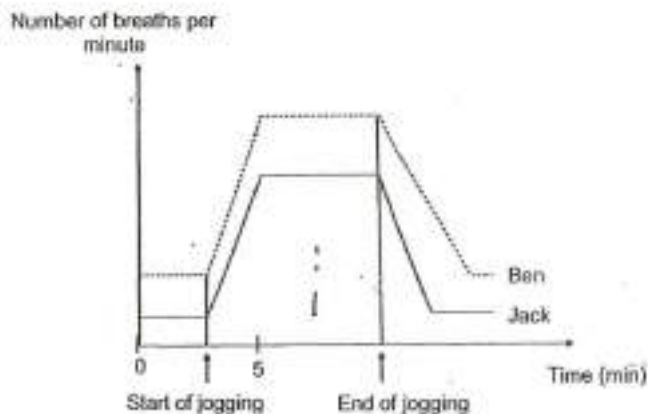
[Remove From Test](#)

## Question 43

Primary 5 Science » Primary 5 Science (Term 4)

0 pts

The graph below shows the breathing rates of two boys, Ben and Jack. At first, they were both resting, then they started jogging together and later they stopped jogging together at the same time.



Based on the graph provided, describe the change in the breathing rates of both Ben and Jack when they started jogging till 5 minutes. Explain your answer. (2 marks)

This question is designed for extended answers that parent/ teacher will have to assign and guide child to attempt after the test has been completed.

Grading: This question type is not graded on this system and will not affect the final score as it was designed in such a way that it requires manual assistance.

**Question Type:** Essay  
**Date Added:** Tue 27th Jul 2021  
**Last Modified:** N/A  
**QID#:** 28,531,194

**Correctly answered feedback**

During jogging, they have to breathe faster to take in more air with oxygen.

**Incorrectly answered feedback**

During jogging, they have to breathe faster to take in more air with oxygen.

[Answers](#) | [Edit](#) | [Duplicate](#) | [Used In](#) | [Reorder](#)

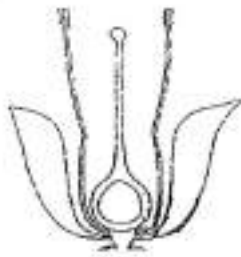
[Remove From Test](#)

## Question 44

Primary 5 Science » Primary 5 Science (Term 4)

0.5 pts

The two diagrams below show the reproductive systems of a flower and a human female respectively.

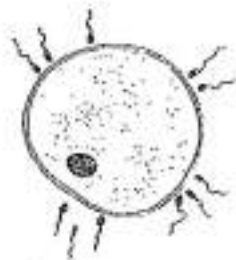


reproductive system of a flower



reproductive system of a human female

The diagram below shows two types of reproductive cells in humans.



State if the following statements about the reproductive cells are true or false by writing "T" or "F" in the table below. [2]

The fertilised egg will develop into a seed.

- A) TRUE  
 ✓ B) FALSE

**Question Type:** True False

Date Added: Tue 27th Jul 2021  
Last Modified: N/A  
QID#: 28,531,172

Answers | Edit | Duplicate | Used In | Reorder

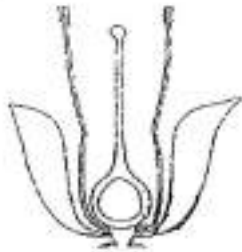
Remove From Test

### Question 45

Primary 5 Science » Primary 5 Science (Term 4)

0.5 pts

The two diagrams below show the reproductive systems of a flower and a human female respectively.

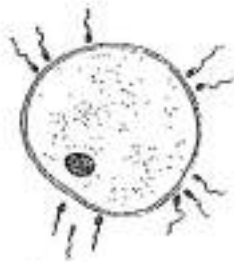


reproductive system of a flower



reproductive system of a human female

The diagram below shows two types of reproductive cells in humans.



State if the following statements about the reproductive cells are true or false by writing "T" or "F" in the table below. [2]

The sperms are produced in the testes of the male.

- ✓ A) TRUE
- B) FALSE

Question Type: True False  
Date Added: Tue 27th Jul 2021  
Last Modified: N/A  
QID#: 28,531,173

Answers | Edit | Duplicate | Used In | Reorder

Remove From Test

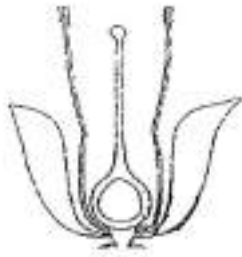
### Question 46

Primary 5 Science » Primary 5 Science (Term 4)

0.5 pts



The two diagrams below show the reproductive systems of a flower and a human female respectively.

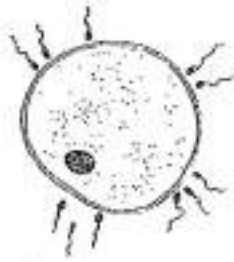


reproductive system of a flower



reproductive system of a human female

The diagram below shows two types of reproductive cells in humans.



State if the following statements about the reproductive cells are true or false by writing "T" or "F" in the table below. [2]

Fertilisation of the egg cell happens in the ovary of the female.

- A) TRUE  
 ✓ B) FALSE

**Question Type:** True False  
**Date Added:** Tue 27th Jul 2021  
**Last Modified:** N/A  
**QID#:** 28,531,174

[Answers](#) | [Edit](#) | [Duplicate](#) | [Used In](#) | [Reorder](#)

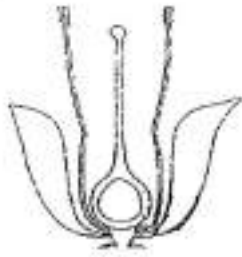
[Remove From Test](#)

## Question 47

Primary 5 Science » Primary 5 Science (Term 4)

0.5 pts

The two diagrams below show the reproductive systems of a flower and a human female respectively.

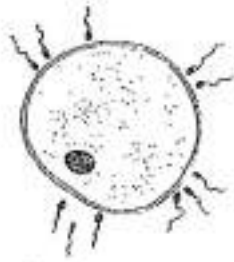


reproductive system of a flower



reproductive system of a human female

The diagram below shows two types of reproductive cells in humans.



State if the following statements about the reproductive cells are true or false by writing "T" or "F" in the table below. [2]

The eggs can be fertilized by two sperms and can develop into a baby.

- A) TRUE
- ✓ B) FALSE

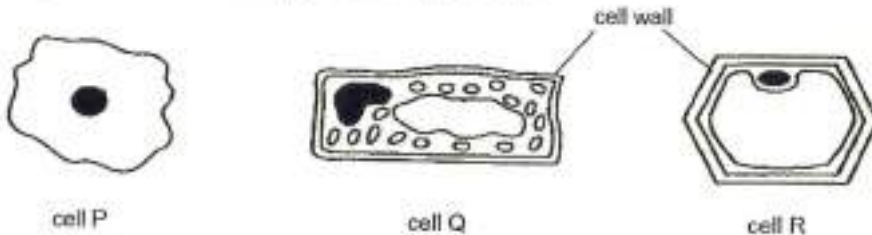
Question Type: True False  
 Date Added: Tue 27th Jul 2021  
 Last Modified: N/A  
 QID#: 28,531,175

[Answers](#) | 
 [Edit](#) | 
 [Duplicate](#) | 
 [Used In](#) | 
 [Reorder](#)
[Remove From Test](#)

### Question 48

Primary 5 Science » Primary 5 Science (Term 4) 0 pts

Study the three different cells, P, Q and R shown below.



Besides containing genetic information that is to be passed down to the next generation, what is another function of the nucleus in a cell? (1 mark)

*This question is designed for extended answers that parent/ teacher will have to assign and guide child to attempt after the test has been completed.*

Grading: This question type is not graded on this system and will not affect the final score as it was designed in such a way that it requires manual assistance.

**Question Type:** Essay  
**Date Added:** Tue 27th Jul 2021  
**Last Modified:** N/A  
**QID#:** 28,531,180

**Correctly answered feedback**

The nucleus controls all activities in the cell.

**Incorrectly answered feedback**

The nucleus controls all activities in the cell.

[Answers](#) | [Edit](#) | [Duplicate](#) | [Used In](#) | [Reorder](#)

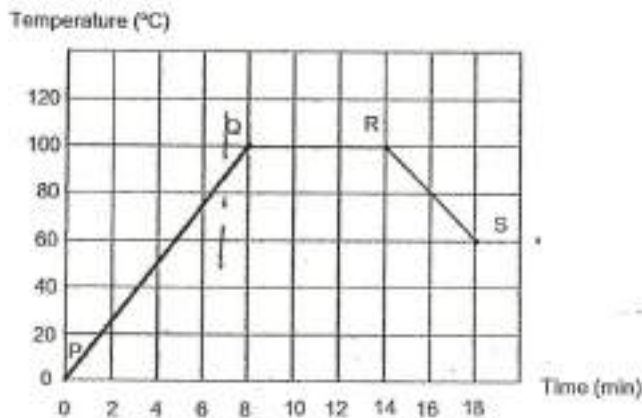
[Remove From Test](#)

## Question 49

Primary 5 Science » Primary 5 Science (Term 4)

0 pts

Christian heated some ice in a beaker. He noticed that all the ice melted after 4 minutes. He recorded the temperature changes throughout his experiment and represented his results as shown in the line graph below.



Christian was told that there was a mistake in the graph as represented by the line PQ.

Explain the mistake in the graph from P to Q. (1 mark)

This question is designed for extended answers that parent/ teacher will have to assign and guide child to attempt after the test has been completed.

Grading: This question type is not graded on this system and will not affect the final score as it was designed in such a way that it requires manual assistance.

**Question Type:** Essay  
**Date Added:** Tue 27th Jul 2021  
**Last Modified:** N/A  
**QID#:** 28,531,181

**Correctly answered feedback**

The temperature should remain at 0°C for the first four minutes before increasing.

**Incorrectly answered feedback**

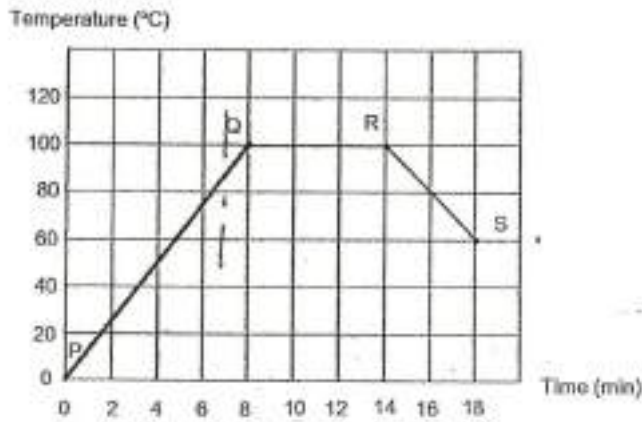
The temperature should remain at 0°C for the first four minutes before increasing.

**Question 50**

Primary 5 Science » Primary 5 Science (Term 4)

0 pts

Christian heated some ice in a beaker. He noticed that all the ice melted after 4 minutes. He recorded the temperature changes throughout his experiment and represented his results as shown in the line graph below.



Christian was told that there was a mistake in the graph as represented by the line PQ.

State the change in state occurring from points Q to R. (1 mark)

*This question is designed for extended answers that parent/ teacher will have to assign and guide child to attempt after the test has been completed.*

*Grading: This question type is not graded on this system and will not affect the final score as it was designed in such a way that it requires manual assistance.*

**Question Type:** Essay  
**Date Added:** Tue 27th Jul 2021  
**Last Modified:** N/A  
**QID#:** 28,531,182

**Correctly answered feedback**

Liquid to gaseous state.

**Incorrectly answered feedback**

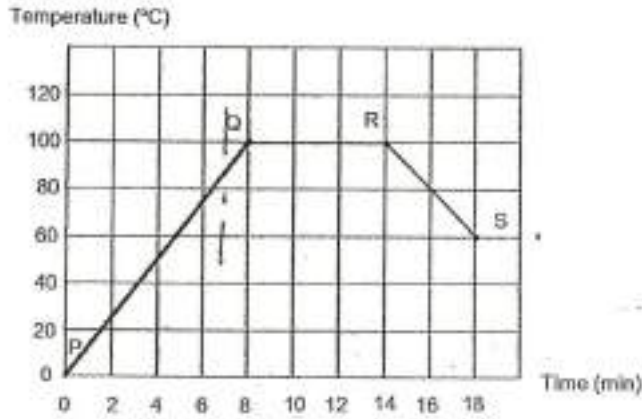
Liquid to gaseous state.

**Question 51**

Primary 5 Science » Primary 5 Science (Term 4)

0 pts

Christian heated some ice in a beaker. He noticed that all the ice melted after 4 minutes. He recorded the temperature changes throughout his experiment and represented his results as shown in the line graph below.



Christian was told that there was a mistake in the graph as represented by the line PQ.

Suggest a possible reason why the temperature decreased from points R to S. (1 mark)

*This question is designed for extended answers that parent/ teacher will have to assign and guide child to attempt after the test has been completed.*

*Grading: This question type is not graded on this system and will not affect the final score as it was designed in such a way that it requires manual assistance.*

**Question Type:** Essay  
**Date Added:** Tue 27th Jul 2021  
**Last Modified:** N/A  
**QID#:** 28,531,186

**Correctly answered feedback**

Christian stopped heating the water.

**Incorrectly answered feedback**

Christian stopped heating the water.

[Answers](#) | [Edit](#) | [Duplicate](#) | [Used In](#) | [Reorder](#)

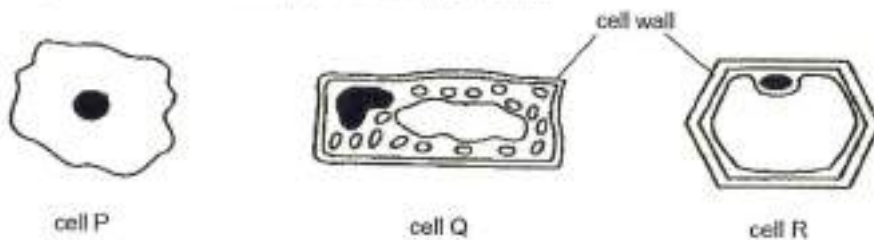
[Remove From Test](#)

**Question 52**

Primary 5 Science » Primary 5 Science (Term 4)

1 pt

Study the three different cells, P, Q and R shown below.



Which cell(s) is/are taken from an animal? Explain your answer.

**Accepted answers:**

- ✓ Cell P
- ✓ P

**Question Type:** Free Text  
**Date Added:** Tue 27th Jul 2021  
**Last Modified:** N/A  
**QID#:** 28,531,199

**Correctly answered feedback**

Cell P as it does not have a cell wall.

**Incorrectly answered feedback**

Cell P as it does not have a cell wall.

[Answers](#) | [Edit](#) | [Duplicate](#) | [Used In](#) | [Reorder](#)

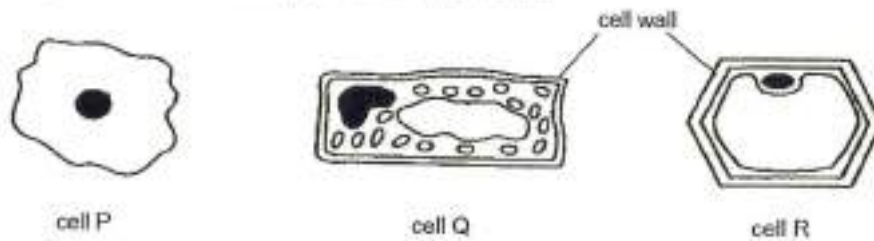
[Remove From Test](#)

**Question 53**

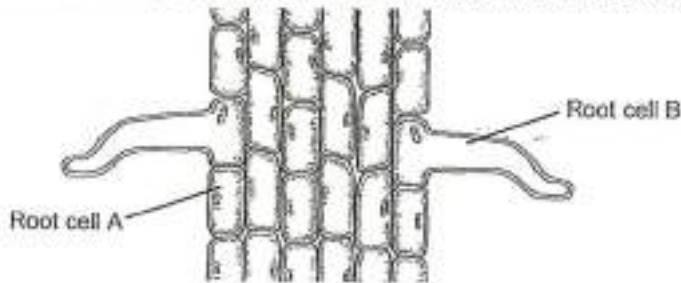
Primary 5 Science » Primary 5 Science (Term 4)

0 pts

Study the three different cells, P, Q and R shown below.



The diagram below shows a section of the root when observed under a microscope.



Observe the two different type of root cells (A and B), shown above.

Root cell B absorbs water faster than root cell A. Based on the structure of the cell shown, explain why. (1 mark)

*This question is designed for extended answers that parent/ teacher will have to assign and guide child to attempt after the test has been completed.*

*Grading: This question type is not graded on this system and will not affect the final score as it was designed in such a way that it requires manual assistance.*

**Question Type:** Essay  
**Date Added:** Tue 27th Jul 2021  
**Last Modified:** N/A  
**QID#:** 28,531,184

**Correctly answered feedback**

Root cell B has a larger exposed surface area.

**Incorrectly answered feedback**

Root cell B has a larger exposed surface area.

[Answers](#) | [Edit](#) | [Duplicate](#) | [Used In](#) | [Reorder](#)

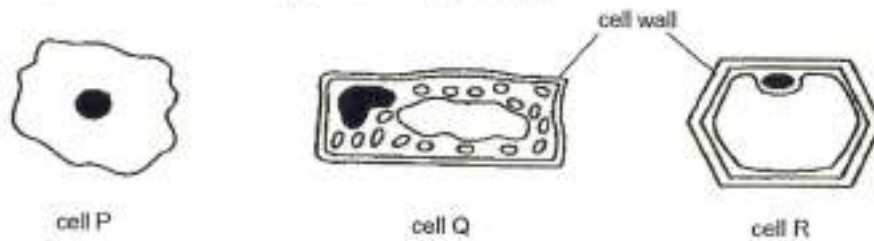
[Remove From Test](#)

**Question 54**

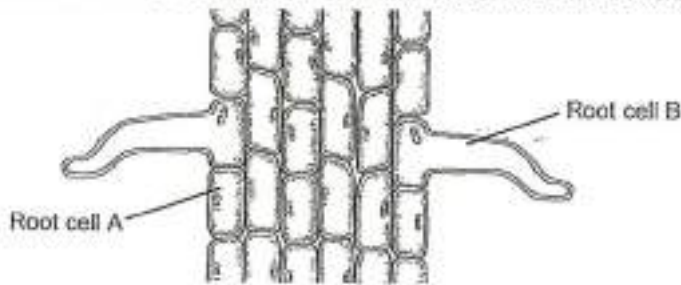
Primary 5 Science » Primary 5 Science (Term 4)

1 pt

Study the three different cells, P, Q and R shown below.



The diagram below shows a section of the root when observed under a microscope.



Observe the two different type of root cells (A and B), shown above.

Which part of a plant cell is missing in the root cell that can be found in a green leaf cell?

**Accepted answers:**

✓ Chloroplast

**Question Type:** Free Text  
**Date Added:** Tue 27th Jul 2021  
**Last Modified:** N/A  
**QID#:** 28,531,200

[Answers](#) | [Edit](#) | [Duplicate](#) | [Used In](#) | [Reorder](#)

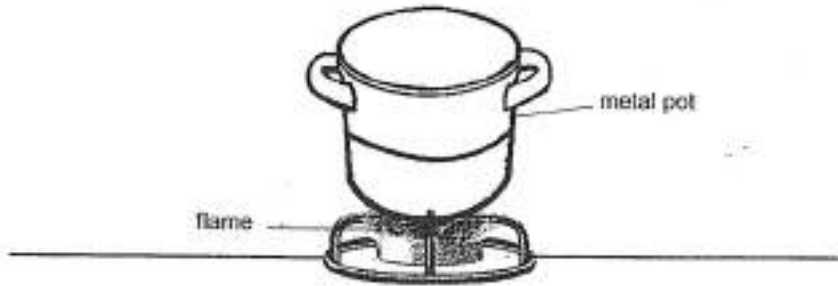
[Remove From Test](#)

**Question 55**

Primary 5 Science » Primary 5 Science (Term 4)

0 pts

Samuel heats up 100 cm<sup>3</sup> of water in a metal pot as shown in the diagram below.



Describe the transfer of heat from the flame to the water. (1 mark)

*This question is designed for extended answers that parent/ teacher will have to assign and guide child to attempt after the test has been completed.*

*Grading: This question type is not graded on this system and will not affect the final score as it was designed in such a way that it requires manual assistance.*

Question Type: Essay  
 Date Added: Tue 27th Jul 2021  
 Last Modified: N/A  
 QID#: 28,531,183

**Correctly answered feedback**

**The metal pot gained heat from the flame and transferred the heat to the water in the pot.**

**Incorrectly answered feedback**

**The metal pot gained heat from the flame and transferred the heat to the water in the pot.**

[Answers](#) | [Edit](#) | [Duplicate](#) | [Used In](#) | [Reorder](#)

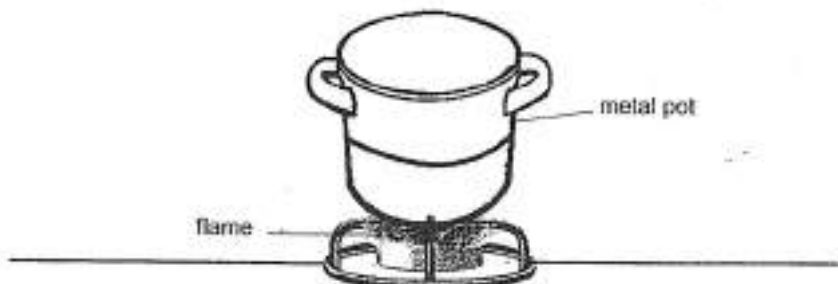
[Remove From Test](#)

## Question 56

Primary 5 Science » Primary 5 Science (Term 4)

0 pts

Samuel heats up 100 cm<sup>3</sup> of water in a metal pot as shown in the diagram below.



Explain why metal is a suitable material to make the pot. (1 mark)

*This question is designed for extended answers that parent/ teacher will have to assign and guide child to attempt after the test has been completed.*



Grading: This question type is not graded on this system and will not affect the final score as it was designed in such a way that it requires manual assistance.

**Question Type:** Essay  
**Date Added:** Tue 27th Jul 2021  
**Last Modified:** N/A  
**QID#:** 28,531,179

**Correctly answered feedback**

Metal is a good conductor of heat.

**Incorrectly answered feedback**

Metal is a good conductor of heat.

[Answers](#) | [Edit](#) | [Duplicate](#) | [Used In](#) | [Reorder](#)

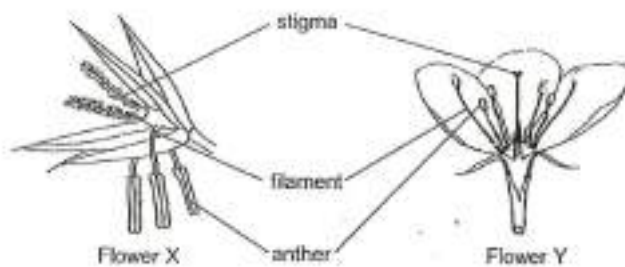
[Remove From Test](#)

## Question 57

Primary 5 Science » Primary 5 Science (Term 4)

0 pts

The diagram below shows two flowers. One is a wind-pollinated flower while the other is an animal-pollinated flower.



Observe the diagrams of the flowers carefully.

Explain why fertilisation did not occur when the pollen grain of flower X are transferred to the stigma of flower Y? (1 mark)

*This question is designed for extended answers that parent/ teacher will have to assign and guide child to attempt after the test has been completed.*

Grading: This question type is not graded on this system and will not affect the final score as it was designed in such a way that it requires manual assistance.

**Question Type:** Essay  
**Date Added:** Tue 27th Jul 2021  
**Last Modified:** N/A  
**QID#:** 28,531,185

**Correctly answered feedback**

Pollen of a different type of plant will not be able to fertilise it.

**Incorrectly answered feedback**

Pollen of a different type of plant will not be able to fertilise it.

[Answers](#) | [Edit](#) | [Duplicate](#) | [Used In](#) | [Reorder](#)

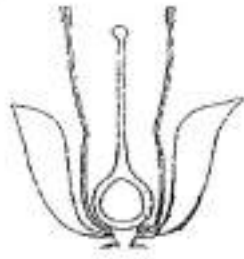
[Remove From Test](#)

## Question 58

Primary 5 Science » Primary 5 Science (Term 4)

0 pts

The two diagrams below show the reproductive systems of a flower and a human female respectively.



reproductive system of a flower



reproductive system of a human female

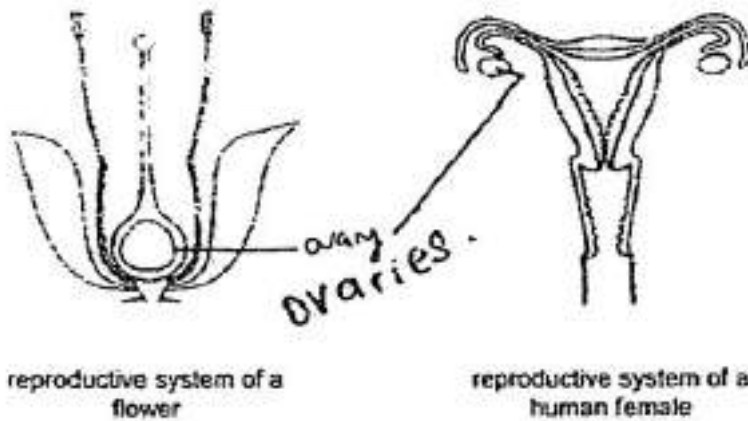
Label the ovaries in the two diagrams above. (1 mark)

*This question is designed for extended answers that parent/ teacher will have to assign and guide child to attempt after the test has been completed.*

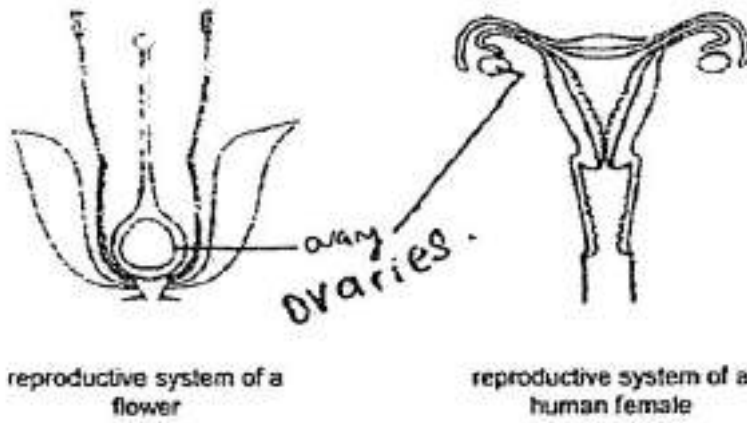
*Grading: This question type is not graded on this system and will not affect the final score as it was designed in such a way that it requires manual assistance.*

Question Type: Essay  
 Date Added: Tue 27th Jul 2021  
 Last Modified: N/A  
 QID#: 28,531,188

**Correctly answered feedback**



**Incorrectly answered feedback**



[Answers](#) | 
 [Edit](#) | 
 [Duplicate](#) | 
 [Used In](#) | 
 [Reorder](#)

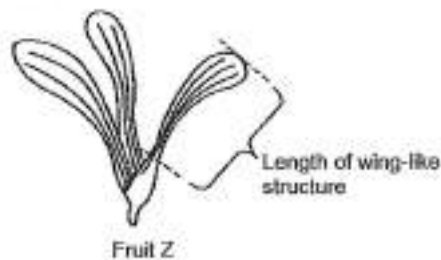
[Remove From Test](#)

### Question 59

Primary 5 Science » Primary 5 Science (Term 4)

0 pts

Weiming wanted to find out how the length of the wing-like structure of fruit Z affects the time it takes to reach the ground.



He dropped the fruit from a height of 3 m and recorded the time taken for it to reach the ground. He repeated the experiment using the same fruit but with different lengths of the wing-like structures. The results were recorded in the table below.

Length of wing-like structure (cm)	Time taken for the fruit Z to reach the ground (s)			
	1 <sup>st</sup> try	2 <sup>nd</sup> try	3 <sup>rd</sup> try	Average
6	6.5	7.0	6.9	6.8
5	4.9	4.7	5.1	4.9
4	1.7	1.9	1.8	1.8

What conclusion can Weiming make based on the results?

*This question is designed for extended answers that parent/ teacher will have to assign and guide child to attempt after the test has been completed.*

*Grading: This question type is not graded on this system and will not affect the final score as it was designed in such a way that it requires manual assistance.*

**Question Type:** Essay  
**Date Added:** Tue 27th Jul 2021  
**Last Modified:** N/A  
**QID#:** 28,531,191

**Correctly answered feedback**

**The longer the wing-like structure, the longer it will take for fruit Z to reach the ground.**

**Incorrectly answered feedback**

**The longer the wing-like structure, the longer it will take for fruit Z to reach the ground.**

[Answers](#) | 
 [Edit](#) | 
 [Duplicate](#) | 
 [Used In](#) | 
 [Reorder](#)

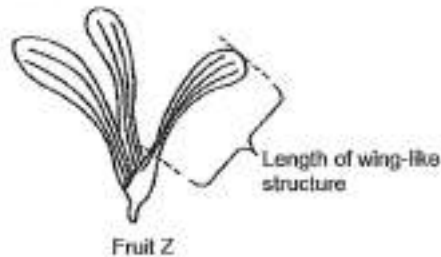
[Remove From Test](#)

## Question 60

Primary 5 Science » Primary 5 Science (Term 4)

0 pts

Weining wanted to find out how the length of the wing-like structure of fruit Z affects the time it takes to reach the ground.



He dropped the fruit from a height of 3 m and recorded the time taken for it to reach the ground. He repeated the experiment using the same fruit but with different lengths of the wing-like structures. The results were recorded in the table below.

Length of wing-like structure (cm)	Time taken for the fruit Z to reach the ground (s)			
	1 <sup>st</sup> try	2 <sup>nd</sup> try	3 <sup>rd</sup> try	Average
6	6.5	7.0	6.9	6.8
5	4.9	4.7	5.1	4.9
4	1.7	1.9	1.8	1.8

State one reason why trees need to disperse their fruits far away from the parent plant. (1 mark)

*This question is designed for extended answers that parent/ teacher will have to assign and guide child to attempt after the test has been completed.*

*Grading: This question type is not graded on this system and will not affect the final score as it was designed in such a way that it requires manual assistance.*

**Question Type:** Essay  
**Date Added:** Tue 27th Jul 2021  
**Last Modified:** N/A  
**QID#:** 28,531,193

**Correctly answered feedback**

To avoid overcrowding.

**Incorrectly answered feedback**

To avoid overcrowding.

[Answers](#) | [Edit](#) | [Duplicate](#) | [Used In](#) | [Reorder](#)

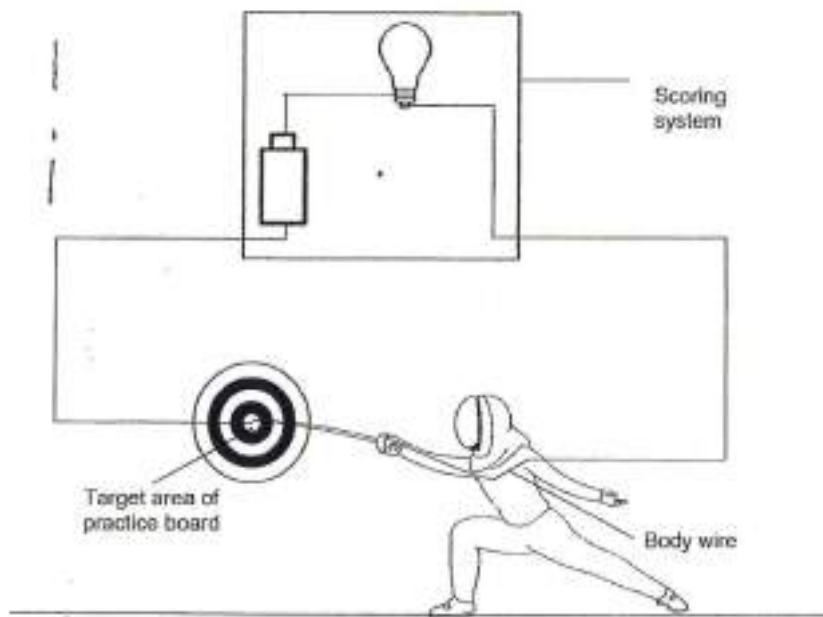
[Remove From Test](#)

**Question 61**

Primary 5 Science » Primary 5 Science (Term 4)

0 pts

Fencing players use practice boards to improve their striking skills in preparation for a match. The diagram below shows the player and the circuit for the scoring system. The player in the diagram below wears a suit with a body wire attached at one end of his weapon and at the other end to the scoring system as shown below. When a player's weapon hits the target area on the practice board, the bulb in the scoring system will light up.



Based on the set-up above, explain why happens when the player's weapon strikes the middle of the target board and lights up the bulb in the scoring system. (2 marks)

*This question is designed for extended answers that parent/ teacher will have to assign and guide child to attempt after the test has been completed.*

*Grading: This question type is not graded on this system and will not affect the final score as it was designed in such a way that it requires manual assistance.*

**Question Type:** Essay  
**Date Added:** Tue 27th Jul 2021  
**Last Modified:** N/A  
**QID#:** 28,531,195

**Correctly answered feedback**

**When the player strikes the target area, the bulb will light up as it is a closed circuit. Current from the battery is then able to flow which lights up the light bulb.**

**Incorrectly answered feedback**

**When the player strikes the target area, the bulb will light up as it is a closed circuit. Current from the battery is then able to flow which lights up the light bulb.**

[Answers](#) | [Edit](#) | [Duplicate](#) | [Used In](#) | [Reorder](#)

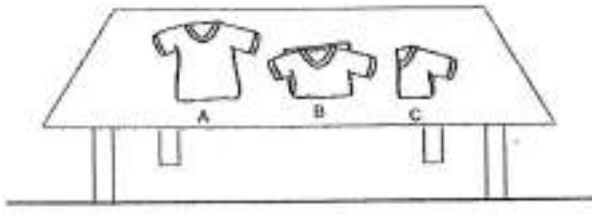
[Remove From Test](#)

## Question 62

Primary 5 Science » Primary 5 Science (Term 4)

0 pts

Evan carried out an experiment to investigate one factor affecting the rate of evaporation of water. He took three similar shirts each completely wet with the same amount of water. He did not fold shirt A, folded shirt B once and shirt C two times, as shown in the diagram below. The shirts were then left on a table in an enclosed room at 25 °C. Evan recorded the time taken for each shirt to dry completely.



Suggest two other ways by which Evan can speed up the drying of his three shirts. (2 marks)

*This question is designed for extended answers that parent/ teacher will have to assign and guide child to attempt after the test has been completed.*

*Grading: This question type is not graded on this system and will not affect the final score as it was designed in such a way that it requires manual assistance.*

**Question Type:** Essay  
**Date Added:** Tue 27th Jul 2021  
**Last Modified:** N/A  
**QID#:** 28,531,196

### Correctly answered feedback

Put a fan beside the shirts and put it in a hotter area/in the sun.

### Incorrectly answered feedback

Put a fan beside the shirts and put it in a hotter area/in the sun.

[Answers](#) | [Edit](#) | [Duplicate](#) | [Used In](#) | [Reorder](#)

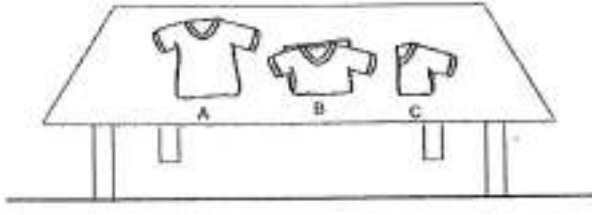
[Remove From Test](#)

## Question 63

Primary 5 Science » Primary 5 Science (Term 4)

0 pts

Evan carried out an experiment to investigate one factor affecting the rate of evaporation of water. He took three similar shirts each completely wet with the same amount of water. He did not fold shirt A, folded shirt B once and shirt C two times, as shown in the diagram below. The shirts were then left on a table in an enclosed room at 25 °C. Evan recorded the time taken for each shirt to dry completely.



State one difference between the evaporation and boiling of water. (1 mark)

*This question is designed for extended answers that parent/ teacher will have to assign and guide child to attempt after the test has been completed.*

*Grading: This question type is not graded on this system and will not affect the final score as it was designed in such a way that it requires manual assistance.*

**Question Type:** Essay  
**Date Added:** Tue 27th Jul 2021  
**Last Modified:** N/A  
**QID#:** 28,531,197

#### Correctly answered feedback

Boiling is at 100°C but evaporation is less than 100°C.

#### Incorrectly answered feedback

Boiling is at 100°C but evaporation is less than 100°C.

[Answers](#) | [Edit](#) | [Duplicate](#) | [Used In](#) | [Reorder](#)

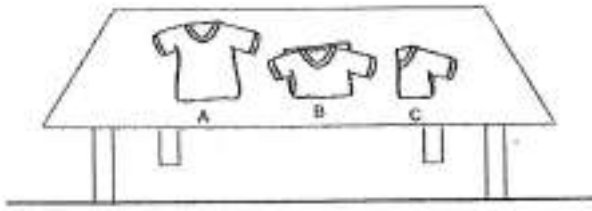
[Remove From Test](#)

## Question 64

Primary 5 Science » Primary 5 Science (Term 4)

2 pts

Evan carried out an experiment to investigate one factor affecting the rate of evaporation of water. He took three similar shirts each completely wet with the same amount of water. He did not fold shirt A, folded shirt B once and shirt C two times, as shown in the diagram below. The shirts were then left on a table in an enclosed room at 25 °C. Evan recorded the time taken for each shirt to dry completely.



Which shirt took the shortest time to dry completely? Explain your answer.

**Accepted answers:**

- ✓ Shirt A
- ✓ A

**Question Type:** Free Text  
**Date Added:** Tue 27th Jul 2021  
**Last Modified:** N/A  
**QID#:** 28,531,206

**Correctly answered feedback**

**Shirt A. It has the most exposed surface area resulting in the highest rate of evaporation so shirt A dries the fastest.**

**Incorrectly answered feedback**

**Shirt A. It has the most exposed surface area resulting in the highest rate of evaporation so shirt A dries the fastest.**

[Answers](#) | [Edit](#) | [Duplicate](#) | [Used In](#) | [Reorder](#)

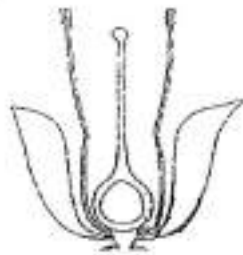
[Remove From Test](#)

## Question 65

Primary 5 Science » Primary 5 Science (Term 4)

1 pt

The two diagrams below show the reproductive systems of a flower and a human female respectively.



reproductive system of a flower



reproductive system of a human female

What does the ovary of the flower turn into after fertilisation?

**Accepted answers:**

✓ Fruit

**Question Type:** Free Text  
**Date Added:** Tue 27th Jul 2021  
**Last Modified:** N/A  
**QID#:** 28,531,202

[Answers](#) | [Edit](#) | [Duplicate](#) | [Used In](#) | [Reorder](#)

[Remove From Test](#)

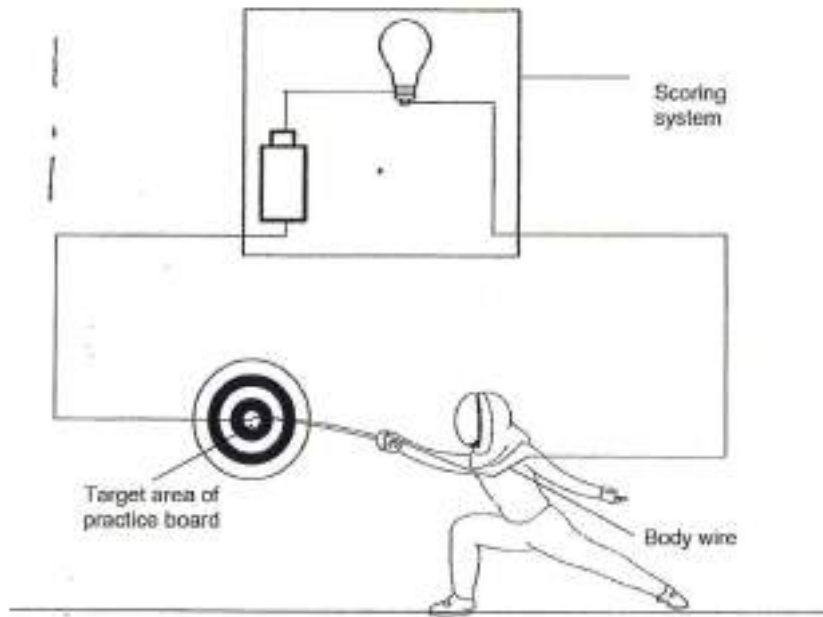
## Question 66

Primary 5 Science » Primary 5 Science (Term 4)

2 pts



Fencing players use practice boards to improve their striking skills in preparation for a match. The diagram below shows the player and the circuit for the scoring system. The player in the diagram below wears a suit with a body wire attached at one end of his weapon and at the other end to the scoring system as shown below. When a player's weapon hits the target area on the practice board, the bulb in the scoring system will light up.



Suggest the material that is used to make the target area. Give a reason for your answer.

**Accepted answers:**

✓ Steel

**Question Type:** Free Text  
**Date Added:** Tue 27th Jul 2021  
**Last Modified:** N/A  
**QID#:** 28,531,204

**Correctly answered feedback**

Steel. It is a good conductor of electricity.

**Incorrectly answered feedback**

Steel. It is a good conductor of electricity.

[Answers](#) | [Edit](#) | [Duplicate](#) | [Used In](#) | [Reorder](#)

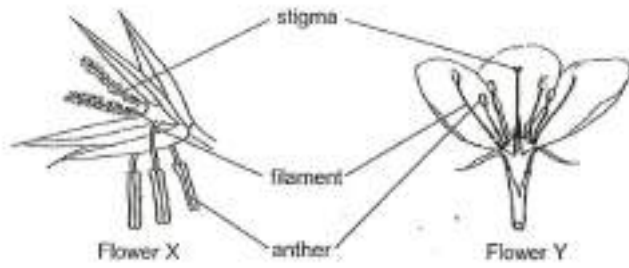
[Remove From Test](#)

## Question 67

Primary 5 Science » Primary 5 Science (Term 4)

1 pt

The diagram below shows two flowers. One is a wind pollinated flower while the other is an animal-pollinated flower.



Observe the diagrams of the flowers carefully.

Based on the diagrams provided above, identify the wind pollinated flower. Explain your answer.

Accepted answers:

- ✓ Flower X
- ✓ X

Question Type: Free Text  
 Date Added: Tue 27th Jul 2021  
 Last Modified: N/A  
 QID#: 28,531,207

**Correctly answered feedback**

Flower X. The anthers are hanging out to the petals.

**Incorrectly answered feedback**

Flower X. The anthers are hanging out to the petals.

Answers | Edit | Duplicate | Used In | Reorder

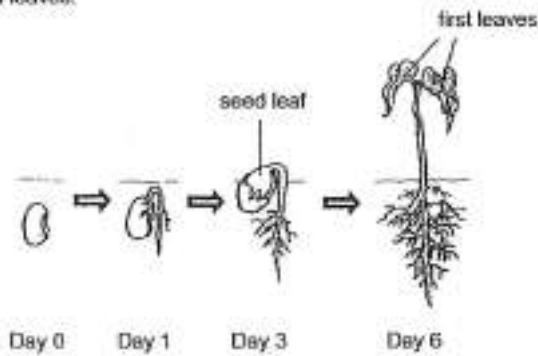
Remove From Test

**Question 68**

Primary 5 Science » Primary 5 Science (Term 4)

1 pt

The diagram below shows a germinating seed with its roots growing out. After several days, it grew more roots and leaves.



Other than oxygen, what are the other two factors that are needed by the seed to germinate?

Accepted answers:

- ✓ Water and warmth
- Warmth and water

- ✓
- ✓ water, warmth
- ✓ warmth, water

**Question Type:** Free Text  
**Date Added:** Tue 27th Jul 2021  
**Last Modified:** N/A  
**QID#:** 28,531,208

[Answers](#) | [Edit](#) | [Duplicate](#) | [Used In](#) | [Reorder](#)

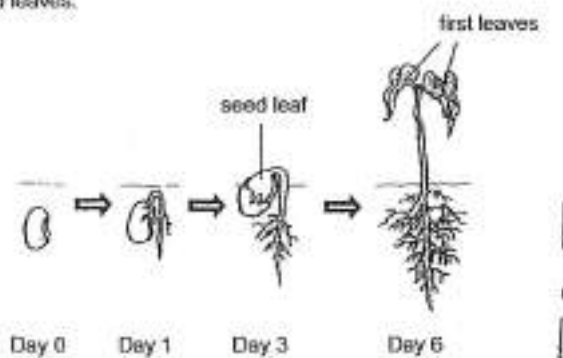
[Remove From Test](#)

## Question 69

Primary 5 Science » Primary 5 Science (Term 4)

1 pt

The diagram below shows a germinating seed with its roots growing out. After several days, it grew more roots and leaves.



Based on the diagram above, at which day will the seedling be able to make its own food?

**Accepted answers:**

- ✓ Day 6
- ✓ 6

**Question Type:** Free Text  
**Date Added:** Tue 27th Jul 2021  
**Last Modified:** N/A  
**QID#:** 28,531,209

[Answers](#) | [Edit](#) | [Duplicate](#) | [Used In](#) | [Reorder](#)

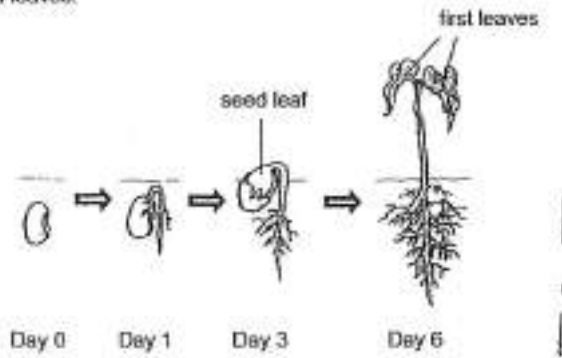
[Remove From Test](#)

## Question 70

Primary 5 Science » Primary 5 Science (Term 4)

0 pts

The diagram below shows a germinating seed with its roots growing out. After several days, it grew more roots and leaves.



What is the function of the seed leaf during germination? (1 mark)

*This question is designed for extended answers that parent/ teacher will have to assign and guide child to attempt after the test has been completed.*

*Grading: This question type is not graded on this system and will not affect the final score as it was designed in such a way that it requires manual assistance.*

**Question Type:** Essay  
**Date Added:** Tue 27th Jul 2021  
**Last Modified:** N/A  
**QID#:** 28,531,198

**Correctly answered feedback**

To provide food for the young plant.

**Incorrectly answered feedback**

To provide food for the young plant.

[Answers](#) | [Edit](#) | [Duplicate](#) | [Used In](#) | [Reorder](#)

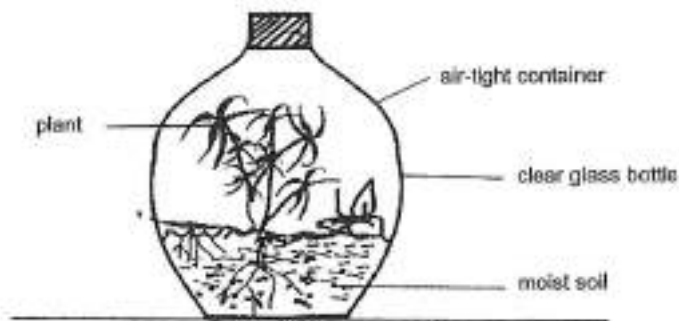
[Remove From Test](#)

## Question 71

Primary 5 Science » Primary 5 Science (Term 4)

0 pts

The picture below shows a terrarium set up by Jackson. A terrarium is a sealable glass container with soil and plants in it which allows for the creation of a small-scale water cycle. He was told to seal the container tightly and place it in a location with some light. He did not water the plants for a few weeks.



How did the moist soil stay moist for a few weeks? (2 marks)

*This question is designed for extended answers that parent/ teacher will have to assign and guide child to attempt after the test has been completed.*

*Grading: This question type is not graded on this system and will not affect the final score as it was designed in such a way that it requires manual assistance.*

Question Type: Essay  
 Date Added: Tue 27th Jul 2021  
 Last Modified: N/A  
 QID#: 28,531,192

**Correctly answered feedback**

**The plants give out water vapour. The water vapour touches the cooler inner surface of the glass container and loses heat and condenses into water droplet which flow down back into the soil, keeping it moist.**

**Incorrectly answered feedback**

**The plants give out water vapour. The water vapour touches the cooler inner surface of the glass container and loses heat and condenses into water droplet which flow down back into the soil, keeping it moist.**

[Answers](#) | [Edit](#) | [Duplicate](#) | [Used In](#) | [Reorder](#)

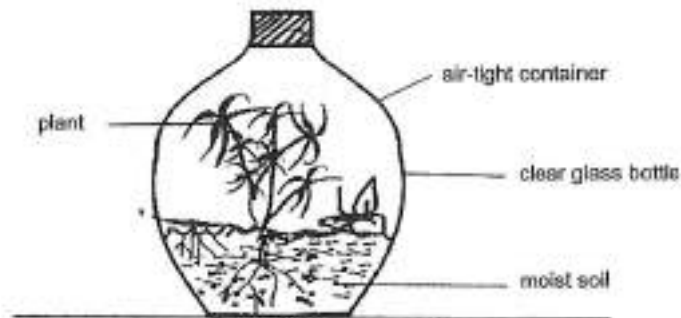
[Remove From Test](#)

## Question 72

Primary 5 Science » Primary 5 Science (Term 4)

0 pts

The picture below shows a terrarium set up by Jackson. A terrarium is a sealable glass container with soil and plants in it which allows for the creation of a small-scale water cycle. He was told to seal the container tightly and place it in a location with some light. He did not water the plants for a few weeks.



Give a possible reason why the container needs to be air-tight in the creation of this small-scale water cycle. (1 mark)

*This question is designed for extended answers that parent/ teacher will have to assign and guide child to attempt after the test has been completed.*

*Grading: This question type is not graded on this system and will not affect the final score as it was designed in such a way that it requires manual assistance.*

Question Type: Essay  
 Date Added: Tue 27th Jul 2021  
 Last Modified: N/A  
 QID#: 28,531,189

**Correctly answered feedback**

The container needs to be air-tight as to not let the liquid in the container escape.

***Incorrectly answered feedback***

The container needs to be air-tight as to not let the liquid in the container escape.

[↗ Answers](#) | [✎ Edit](#) | [📄 Duplicate](#) | [📌 Used In](#) | [⬆️ Reorder](#)

[Remove From Test](#)

www.classmarker.com